

## **Historic, archived document**

Do not assume content reflects current scientific knowledge, policies, or practices.





HARDY PLANTS  
AND THEIR CULTURE  
by THE DANIELS NURSERY, Inc.

1934

---

## NEW LOW PRICES

Thrifty buyers will want to take advantage of this season's prices to add more plantings to their home or orchard. We have had an excellent growing season. Quality plants can now be purchased from us at *new low prices*.

---

# TO OUR CUSTOMERS . . .

In presenting this catalog of hardy plants and their culture, we do so with the kindest regards to you who have favored us heretofore with your orders.

We hope to merit your future patronage by continuing the excellence of our products and improving the efficiency of our service.

We solicit a trial from the prospective customer receiving this booklet, feeling assured that the quality of our plants will meet your most exacting demands.

We have spared neither trouble nor expense in the production of the plants offered for sale.

We point with pride to the fact that our business relations with our customers bear us out in the assertion that our experienced men, receiving reasonable wages, can create a perfect garden for you at less expense and with greater satisfaction.



How to Reach "THE DANIELS NURSERY"

## WHEN YOU VISIT US

Turn south off Highway No. 10 at the Pure Oil Station in Long Lake, go to the next cross road. We are just two blocks west on this road. Driving time from center of Minneapolis is 25 minutes.





FRANC P. DANIELS

*EVERY transaction with this firm must be one of satisfaction to the customer. We are here to serve—that is our creed. If we serve well, profit comes as a matter of course; we go a long way to please the man who gives us our bread and butter. Errors do happen—not often—but when they do, a letter to us will get quick response.*



HARRY G. LOFTUS

**M**R. DANIELS is President and Treasurer of the Daniels Nursery, Inc. He has long been associated with various activities in the field of horticulture, and in organization work promoting the up-building of horticultural work.

Mr. Daniels is a graduate of Minnesota's College of Agriculture and for many years has been on the faculty of the University of Minnesota Farm School lecturing on fruit growing and other horticultural subjects.

**M**R. LOFTUS is Secretary and Manager of landscape operations. Since graduating from the Minnesota School of Agriculture and the North Dakota College of Agriculture he has designed and supervised many public and private landscape projects in the Northwest.

Landscape development to be successful requires the personal interest of the designer, not only upon completion of the work, but continued interest in the proper maintenance of the planting thereafter.

The Daniels Nursery has been successfully built on a policy of satisfying customers. Whether it has been a matter of furnishing plants or performing services, our entire organization has been trained to keep the welfare of its clients uppermost in their minds.

In the many branches of landscape service which we perform, our workers are not only men well fitted through technical training and wide experience, but they have been schooled to give the public that careful and courteous consideration which they have a right to expect.

One's greatest safeguard in buying plants and service is to deal with a nurseryman of proven integrity, skill, and a reputation for fair dealings. We believe that, based on the personal and professional reputations of the men operating The Daniels Nursery—the history of satisfactory performance of the Com-

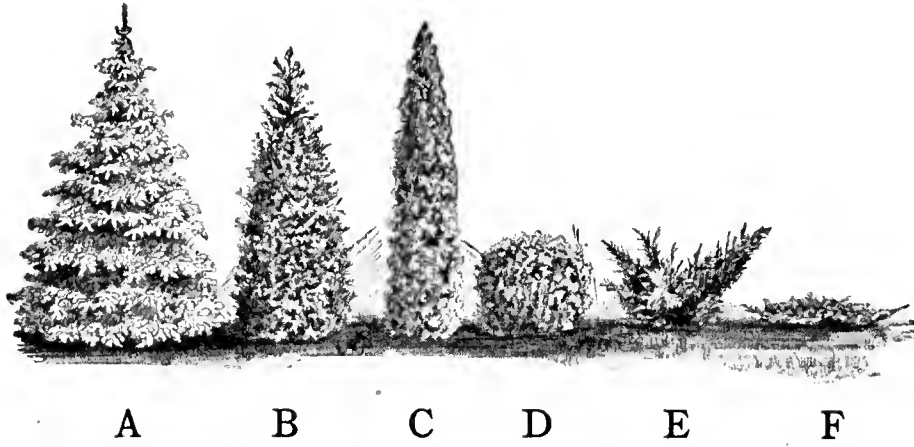
pany in the past—and the skilled workmanship which the organization offers you, that you will find it decidedly to your advantage to let The Daniels Nursery take care of all your nursery needs and horticultural services!



*We invite your inquiry regarding our service—without obligation—by calling us at our Minneapolis telephone Gladstone 2283 or Long Lake 8648. A call at anytime will be given our prompt attention.*



## What You Have to Work With . . .



Various habits of growth obtainable in evergreens are roughly illustrated above. First, determine whether the location you have in mind to plant is suitable for a tree which will develop into a specimen of the size and shape that you want.

**Group "A"** Trees in this group are the largest and tallest growing forms. They are best suited for such purposes as heavy backgrounds, screens, wind-breaks, forest plantings, and individual specimens. Inexperienced planters very often use them in other ways, but in doing so do not realize that the trees will become large and must be removed.

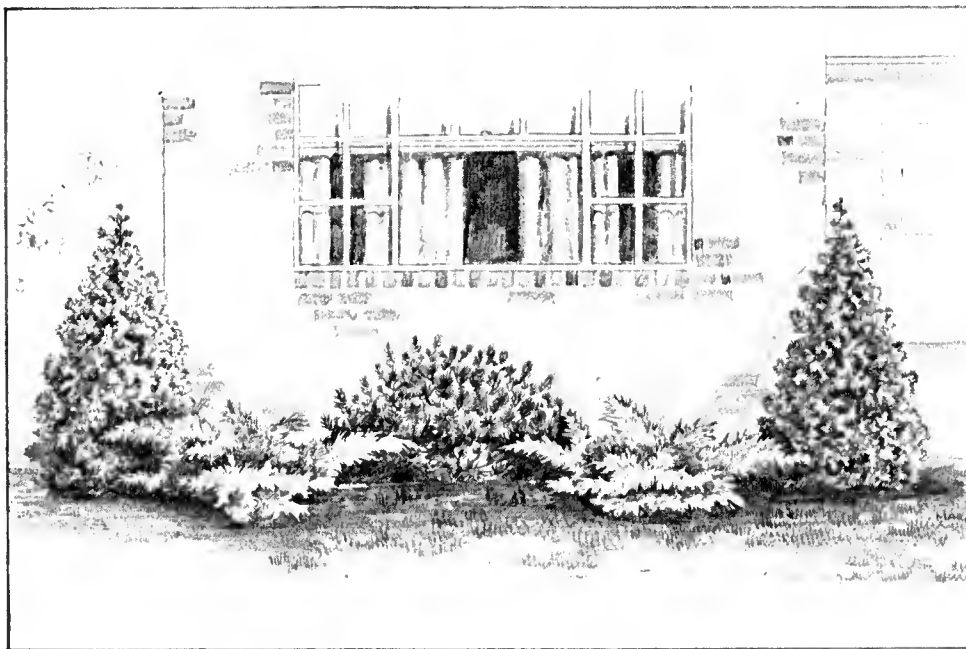
**Group "B"** The average height of trees in this group will run eight to twenty feet, and in diameter usually not more than three to five feet. Such trees are suitable for the taller growing specimens in foundation plantings, entrance groups, also suitable for planting among borders to add contrast to flowering shrubs, or formal uses in gardens.

**Group "C"** This group covers trees of extremely narrow pyramidal habit. The narrow habit of trees in this group may be further improved by trimming, but all of them have a tendency to produce very narrow spire-like forms.

**Group "D"** There is increasing need for round or ball-shaped trees. For use around smaller types of houses in foundation plantings, in corners next to the walk, and in many situations where "tree forms" would be out of the question, these little dwarf growing trees fill the purpose.

**Group "E"** Among the half-erect forms we find the finest of all our evergreens and those which are of greatest use, especially in landscape planting of small areas. Trees in this group include those forms which are essential for the low-growing trees, foundation plantings, entrance plantings, rock gardens, and low-growing groups.

**Group "F"** Trees in this group are the low, creeping, mat-like forms that remain close to the ground. They grow not over six to eight inches high under usual conditions and spread to a considerable diameter. However, as they can easily be clipped and trimmed, they remain for years in a small space. Trees in this group are suitable for rock gardens, to cover terraces or banks, or to finish off a group of taller growing forms.

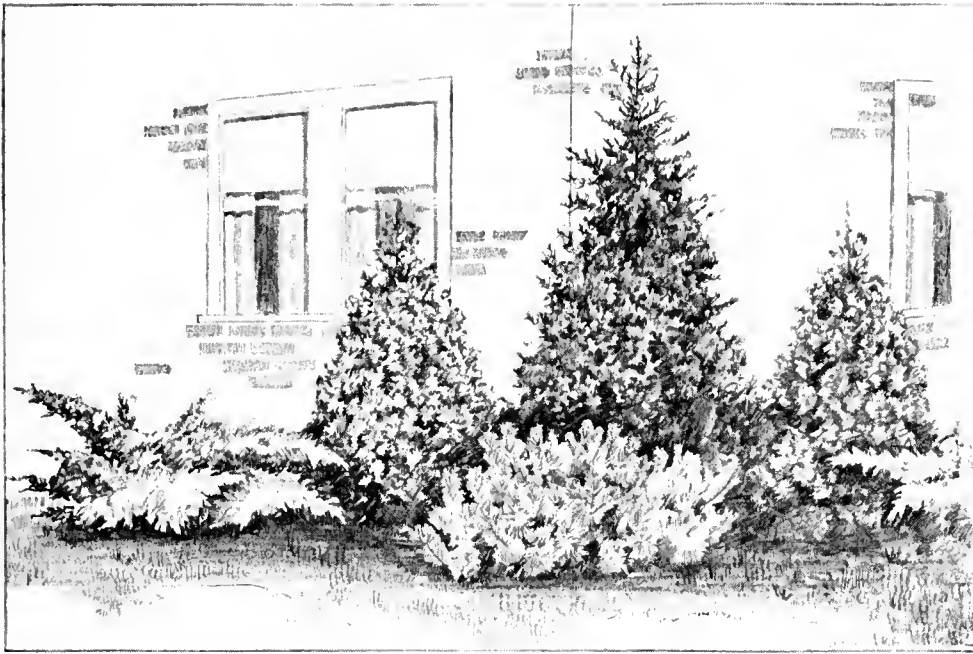


*Evergreen Planting No. 1*

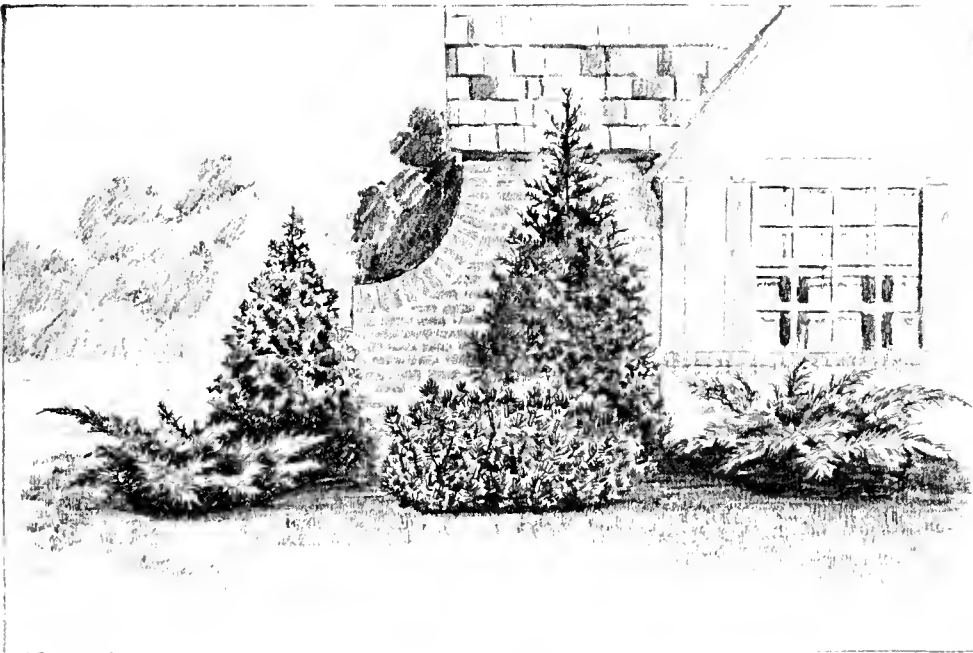
You, too, can secure this planting for your home grounds at a very reasonable price—less than \$15.00. Just tell us to deliver evergreen planting No. 1—We will send it right on to you. Can be planted at a small additional cost.

We wish to acknowledge our appreciation of the courtesy extended by our good nursery friends, "The D. Hill Nursery," for the use of cuts such as shown above.

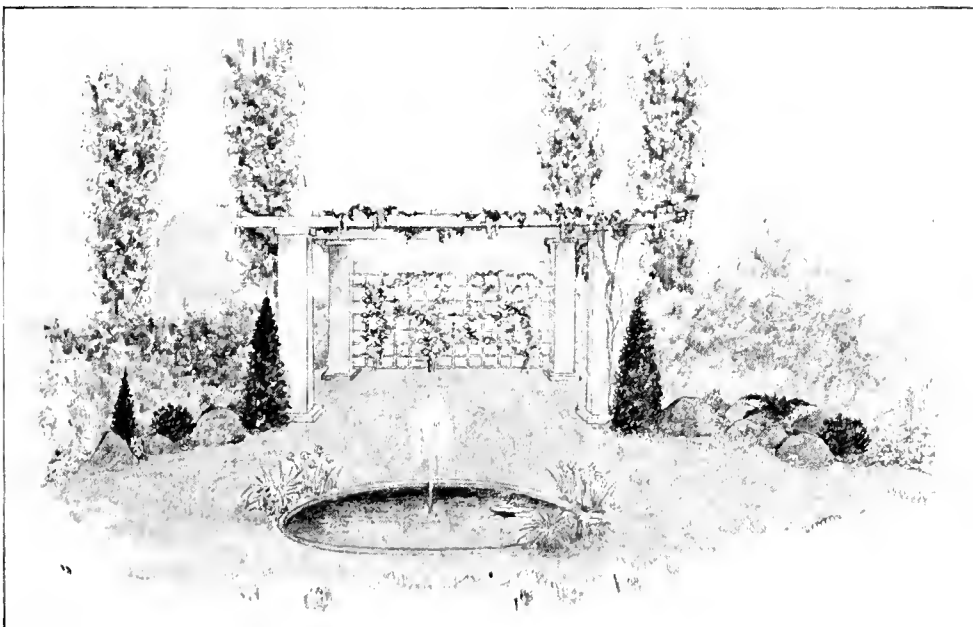




*Evergreen Planting No. 2  
The above planting for less than \$20.50*



*Evergreen Planting No. 3  
This splendid planting of Evergreens, 5 trees for less than \$20.*



## EVERGREENS

are becoming increasingly popular. To secure permanent beauty, a knowledge of their arrangement and growth is essential.

Sometimes the offers of jobbers or dealers, self-styled landscape experts, are not only very expensive but cause a great inconvenience to the home owner. When he later finds he has the wrong type of tree or that it has grown out of place, the planter cannot be located.

It is always best to consult an experienced nurseryman, who has established his reputation for fair dealing and ability to properly plant materials, who is also ready to give you a guarantee of quality, and who can always be found, when you need help and advice in future maintenance.

The Daniels Nursery renders such service and will be pleased to help you at any time.



The Northwest's

# Best Hardy Plants

Hundreds of Twin City and Northwest home owners have planted the well known DANIELS NURSERY BRAND of shrubs. They are large plants with healthy roots.

These strong, vigorous plants are *now* offered at the lowest prices in years. Once you buy them you will never confuse them with mail order or store dry plants.

*"Our plants will grow."*

For your help—Figures immediately following name indicate height to which they will grow.

**PRICES**—All shrubs are priced as shown below except in a few cases where prices are noted following the description.

18-24 inch shrubs.....@ 25 cents each  
2-3 foot shrubs.....@ 40 cents each  
3-4 foot shrubs.....@ 60 cents each  
4-5 foot shrubs.....@ 75 cents each

Dozen rates at 10 times the each price, where a dozen of each variety is ordered.

Customers desiring our individually selected heavy specimen shrubs, which come ready trimmed for planting, should add 10c per plant in each size and grade. Always specify this if wanted.

**ALMOND**, 6 feet. Pink flowering. A beautiful early, spring flowering shrub with its twigs completely covered by small pink blossoms. 2-3 feet, 60c; 3-4 feet, 75c.

**BARBERRY, Red Leaved**. 2 feet. The foliage is an attractive reddish-purple throughout the season. 12-18 inches, 35c each; 18-24 inches, 50c each.

**Barberry, Japanese, Thunbergs**. 2 feet. Dwarf shrub, free from rust; leaves color beautifully in the Fall and the plant is covered with red berries for Winter color. Excellent for bird nesting.

**BUCKTHORN, Common**. 15-18 feet. A hardy, vigorous shrub, covered with black berries in the Fall. Good for heavy grouping of plants.

**Frangulea**, 6-7 feet. A glossy leaved plant, producing red berries in the Fall. Excellent for contrast and also for bird food.



*A place for your  
enjoyment thru-  
out the season.*

**BUDDLEI, Butterfly Bush**. 5-6 feet. Fragrant lavender flowers from August until frost. Lower part of stem should be covered with earth each Fall.

**BUTTON BUSH**. 5-6 feet. Heavy deep green and very attractive foliage; ball shaped heads of creamy-white flowers in late Summer. 2-3 feet, 50c each; 3-4 feet, 75c each.

**CARAGANA, Siberian Pea Tree**. 10-12 feet. Flowers bright yellow, followed by pods. Gray-green foliage. Hardy under the most adverse conditions.

**CHERRY, Dwarf Purple Leaf**. 4-5 feet. Excellent for color contrast. Is compact and can be grouped with other plants.

**CHOCKECHERRY, Black**. 6-8 feet. Black fruit, edible; glossy foliage, slender growth. 2-3 feet, 50c each; 3-4 feet, 75c each.

**Red Berried**. 5-6 feet. One of the best for bird food. Colors beautifully in the Fall. 2-3 feet, 50c each; 3-4 feet, 75c each.

**COTONEASTER**. 5-6 feet. A hardy, compact shrub. It has shiny foliage, black berries and colors like the Maple in the Fall.

**CRAB, Bechtels**. 10-15 feet. The most beautiful small, tree-like shrub produced. Very fragrant pink, double blossoms. Grows well in shrub plantations. 2-3 feet, 75c each; 3-4 feet, \$1.00 each.

**CURRANT, Alpine**. 3-4 feet. Dwarf, small leaved; excellent for foundation plantings; foliage plant only. 18-24 inches, 40c.

**Yellow Flowering**. 6-7 feet. Golden flowers, very early in the Spring. Very fragrant; edible black fruit in mid-season.



**DOGWOOD, Golden Twig.** 6-7 feet. This plant has golden bark, is spreading, and produces a good screen plant. Berries and blooms are white.

**Gray Bark.** 5-6 feet. Noted for Fall color and fruit for birds; slender in habit. 2-3 feet, 50c; 3-4 feet, 75c.

**Red Twiggied.** 6-7 feet. Wide spreading habit; excellent for Winter color. Produces white flowers and fruits. 2-3 feet, 35c; 3-4 feet, 50c.

**Variiegated Leaved.** 4-5 feet. The variegated green and white foliage contrasts beautifully in shrub plantings. An excellent medium sized plant with red twigs. 2-3 feet, 60c each; 3-4 feet, 75c each.

**ELDERBERRY, Black-berried.** 6-8 feet. The old-fashioned elderberry used so much for jelly and wine making—get there ahead of the birds.

**Cutleaf.** 6-7 feet. Has fine cut foliage, fine branches, white flowers, and edible fruit.

**Golden Leaf.** 6-7 feet. A finer-branched shrub than the black-berried. Golden foliage. Fruits are excellent for bird food.

**EUONYMUS ALATUS, Wing Barked.** 5-6 feet. An unusual shrub with wing-like bark. Red fruit and a never-to-be-forgotten Fall color. 2-3 feet, 75c each; 3-4 feet, \$1.00 each. New—Rare—Attractive.

**Common Burning-Bush.** 6-7 feet. Produces great masses of berries resembling Bittersweet. Very effective for Fall color. Slender in habit of growth. 2-3 feet, 50c; 3-4 feet, 75c.

**FORSYTHIA, Golden Bell.** 5-6 feet. Few Spring flowering shrubs produce the beautiful effects of this plant. Excellent in masses. 3-4 feet, 75c each.

**HONEYSUCKLE, Morrows.** 5-6 feet. Semi-spreading, light foliage, red fruit, white flowers.

**Belle Albida.** 8-10 feet. White flowers; upright hardy shrub. Very satisfactory for informal hedge plants or screens.

**Pink Flowered.** 8-10 feet. The best known of all this family. Produces pink flowers in May, followed by masses of fruit in mid-season. 2-3 feet, 35c each; 3-4 feet, 50c each.



## Garden Talk

THE SPREAD of a shrub usually will approximate its height. You can space accordingly but must remember this does not give you an immediate full effect in planting. With the large shrubs it is best to plant these 4 to 5 feet apart and then keep them shaped to fit the border.

DO NOT OVERLOOK pruning the shrubs at the proper time. Terminal blooming plants like the Hydrangeas, Spirea Anthony Waterer, etc., are better pruned annually. Otherwise all shrubs that blossom previous to June 25 should be pruned when necessary immediately after the blossoms fall. Of course, Fall or Winter pruning is not injurious to any plant, although it will remove some of next season's bloom when the plant sets its buds on this wood.

THE COMMON ERROR of most landscape architects and also amateur planters is to overplant. Better a year of patience and then the years of satisfaction that follow, than overcrowded masses of shrubs that cannot give the best effect. Immediate effects can be secured by using larger shrubs, but they should be spaced the proper distance.

You will find that THE DANIELS NURSERY, knowing plant materials, will follow these rules carefully.

**White Flowered.** 10 feet. Resembles the pink flowered variety in habit of growth; produces white flowers and red fruit.

**HYDRANGEA, Hills of Snow.** 3-4 feet. A mass of white, heavy flowers in mid-summer. Excellent for foundation planting.

**Pee Gee.** 3-4 feet. Pink flowers in the Fall, coloring to varied shades. This plant should be cut back severely each Fall or Spring to induce large flowers.

**HOLLY, Winterberry.** 5-6 feet. A hardy, slow growing shrub of the holly family with bright red berries lasting into the Winter. 2-3 feet, 75c each; 3-4 feet, \$1.00 each.

**JUNEBERRY.** 6-7 feet. Produces masses of white, fragrant flowers in the Spring. This is followed by bright red berries turning to purple, resembling the blueberry in flavor. Excellent for sauce if, as we said before, you get there ahead of the birds.

**LILACS, Common Purple.** 6-8 feet. Produces masses of purple flowers. Usually requires 4 to 5 years to come into bloom.

**Common White.** 6-8 feet. Similar in habit of growth to the purple variety. White flowers. Common purple and white lilacs at 2-3 feet, 30c each; 3-4 feet, 40c each; 4-5 feet, 75c each.

**Persian.** 6-7 feet. A fine leaved, many branched variety. Does not sucker like the common varieties. Truly the queen of the early flowering shrubs.

**Rothmagensis.** 6-7 feet. Of the same habit as the Persian but produces larger flowers with a reddish-purple tinge. The best of the Persian varieties.

**Villosa.** 8-10 feet. Late flowering—pink lilac. Has large leaves, gray stems, and is excellent for background plantings.

## THE GRAFTED LILACS

2-3 feet—50c each

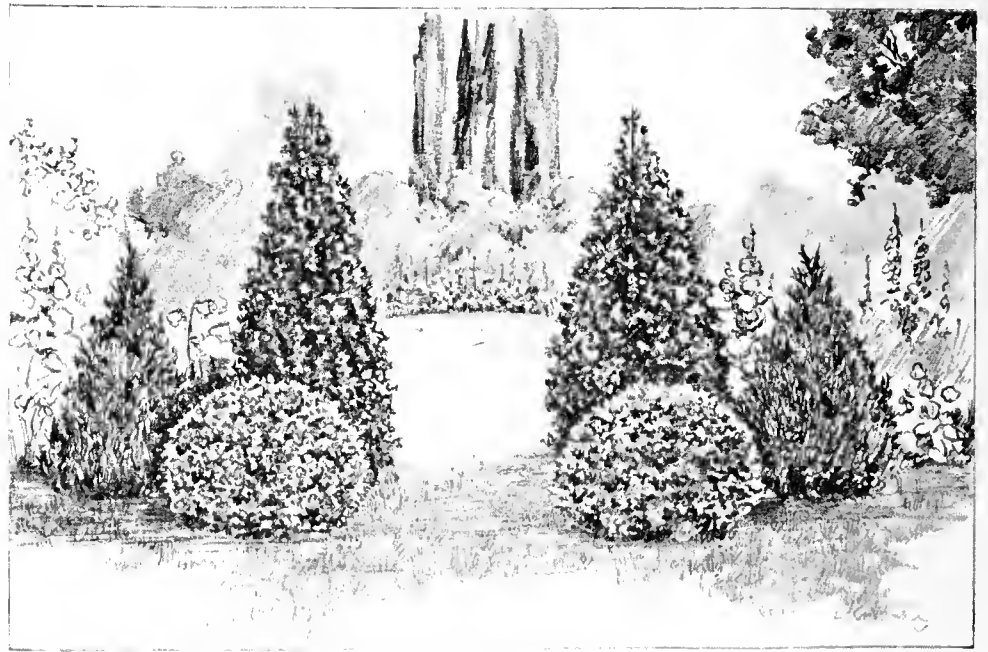
3-4 feet—75c each

4-5 feet—\$1.00 each

These now come in both the French Hybrid and Chinese and Siberian varieties. They are early bloomers, producing masses of fragrant flowers.

**Chinese—Mertensia.** Pink flowers.

**Siberian.** White flowers.



*The entrance to the garden or the outdoor living room can be made beautiful. Good taste demands proper planning.*

### French named varieties—

**Alfonse LaValle.** Double, clear lavender.

**Belle de Nancy.** Double, rose lilac.

**Charles Jolly.** Double, very dark purple.

**Charles X.** Single, reddish lilac.

**Ludwig Spaeth.** Single, very deep maroon-red.

**Madam Lemoine.** Large, pure white, double.

**Marie LeGraye.** Single, white; plant dwarf.

**Michel Buchner.** Double, pale pink, large flowers.

**Pres. Grevy.** Double, blue; best of this color.

**MATRIMONY VINE.** An extremely hardy plant that can be used over wall or in mass plantings. Purple flowers. Red fruits in the Fall. Two year No. 1, 50c.

**MAPLE, Ginnala.** 6-8 feet. A beautiful shrub for medium to high plantings. It is a bushy grower, densely foliated with the characteristic maple leaf. Leaves turn a gorgeous shade of red and crimson in Autumn.

## LARGE SHRUBS

for immediate effect

For backgrounds, screens and other immediate effects. We have extra large shrubs.

At very reasonable prices

Gain time—Save money—

Use Daniels Large Shrubs

Not all gardens require the same treatment. Would you like a well planned entrance to your garden, the cost of which would be less than \$25.00? Nice sizes for quick effect. Call us; we will be pleased to discuss your problem and plan with you.

## MOCK ORANGE

This family of plants produce fragrant white flowers that resemble the orange blossom.

**Coronarius.** 5-6 feet. A semi-spreading, dwarf shrub. Very fragrant flowers in masses.

**Grandiflora.** 8-10 feet. Large flowers in masses; excellent for high plantings.

**Lemoine.** 4-5 feet. Semi-dwarf, fine leaved, dense foliage. Excellent for foundation planting. Small flowers.

**Lemoine, Boule de Argent.** 6-7 feet. Flowers double and sweet scented. A new variety. 2-3 feet, 75c each; 3-4 feet, \$1.00 each.

**Virginalis.** 6-7 feet. Semi-double flowers. Blooms profusely in spring and sparsely throughout the season. Very fragrant. This should be in every home planting. 2-3 feet, 50c; 3-4 feet, 75c.

We Guarantee Live, Healthy  
Plants at the . . .  
**LOWEST PRICES**

**OLIVE, Russian.** 10-12 feet. A gray-green foliage plant. Excellent for backgrounds, heavy screen plantings, windbreaks.

**PEPPER BUSH (Sweet Pepper).** 4-5 feet. A low-growing shrub with fragrant white flowers in July and August. A new variety on our list. Prefers shady, moist locations. 18-24 inch, 75c each; 2-3 feet, \$1.00 each.

**PLUM, Newport.** 10-12 feet. A purple leaf plum. Taller than the cherry type. Good contrasting color for high backgrounds. 3-4 feet, 75c each; 4-5 feet, \$1.00 each.

**DOUBLE FLOWERING PLUM.** 6-7 feet. Often misnamed flowering Almond. It is hardier than the Almond. Flowers in great masses. Red bud, opening to beautiful pink rosette. 2-3 feet, 40c each; 3-4 feet, 60c each; 4-5 feet, \$1.00 each.

**PRIVET, Lodense.** 24-30 inch. Just as the name indicates, it is low and dense. The only hardy privet in the Northwest. Excellent for facing down shrub plantings. Can be used to cover areaways; also an excellent low hedge similar to box. Low prices on this new shrub are: 12-18 inch, 35c each; 18-24 inch, 50c each.

**QUINCE, Japanese.** 5-6 feet. A spreading shrub of medium height with a profusion of scarlet flowers in May. 2-3 feet, 75c each; 3-4 feet, \$1.00 each.

●  
**ROSES**

See the special offer and unusually low prices on our Roses—Page 10



*The farm house suffers from lack of planting just like any other. Contrast the above picture with the usual farm yard view.*

.....  
**SPECIAL PLANTS**

We have many plants in small quantities. If you do not find what you want, write us. If we haven't it, we will get it for you.

If you are in need of advice as to what to plant, do not hesitate to call on us. That is part of "Daniels' Service."

We have plants for many purposes, some of which are not listed in this booklet.

**WRITE US.**

.....  
**PROTECT YOUR TREES AND SHRUBS**

Your old trees are priceless. Because of dry seasons, they should be given proper attention in trimming out borer-infested wood and proper tree food should be supplied. Shrubs should also be renovated, cleaned up and fed.

Our expert will call at any local point, make an inspection free and furnish an estimate for the work. Customers at a distance may write us for this information.

.....  
**SPIREA**

**Anthony Waterer.** 18-24 inch. Bright crimson flowers throughout the summer. The best of the low shrubs. 12-18 inch, 25c each; 18-24 inch, 35c each.

**Arguta. Snow Garland.** 4-5 feet. A graceful, early-flowering shrub. Comes into bloom a few days before the bridal wreath.

**Billardi.** 4-5 feet. One of the best medium-sized flowering shrubs. Long pink flowers, blooming all season.

**Frobeli.** 2-3 feet. Flowers are pink. Low, bushy shrub. Should be cut back each year.

**Ninebark.** 5-6 feet. Large white flowers, followed by red seed pods. Good bird food. Excellent for screen plantings.

**Golden Leaf Spirea.** 5-6 feet. A contrasting foliage shrub. Splendid for tall-growing screen.

**Sorbifolia.** 4-5 feet. Small leaf, resembling the Ash. A profuse bloomer, with white blooms in plumes. Cut back each year for best success.

**Van Houttei or Bridal Wreath.** 5-6 feet. An old-fashioned favorite. Clusters of pure white bloom in the Spring. Our new low prices on this shrub are: 2-3 feet, 25c each; 3-4 feet, 35c each; 4-5 feet, 50c each.

**SNOWBERRY.** 3-4 feet. This shrub produces great masses of white berries in the Fall. Has a bright foliage throughout the season.

**SUMAC, Staghorn Cut-leaf.** A slender cut-leaf variety. Produces a splendid effect in a planting. The colors are vivid crimson in the Fall.

**TAMARIX.** 6-7 feet. A tall shrub with a lace-like foliage. Bluish-gray with large clusters of pink flowers.

●  
**VIBURNUMS**

**Arrowwood.** 5-6 feet. A glossy-leaf shrub. Very bright, white flowers, producing blue berries. Colors bright in the Fall.

**Cranberry, High Bush.** 6-7 feet. This shrub produces heavy clusters of bright red berries.

**Snowball.** 6-7 feet. The old-fashioned variety. Slow in growth, beautiful when in full bloom.

**Wayfaring Tree.** 5-6 feet. A gray-barked, gray-foliage shrub, turning to a beautiful crimson in the Fall. Produces large clusters of red berries, turning to black.

**WEIGELIA, Rosea.** 4-5 feet. A beautiful, pink-flowered shrub with flowers along the stem. Beautiful in the border.

.....  
**SOME THINGS NEW AND DIFFERENT**

We are offering some new shrubs not generally listed

**MOCK ORANGE—Banniere.** Flowers often 3 inches across. The best hybrid produced.

**SUMACH—Fern Leaved.** Very ornamental, brilliant colors in fall. Superior to Staghorn.

**ROSE FLOWERED LOCUST.** Flowers large purplish rose. Far superior to Rose Acacia.

**WEIGELIA—Variegated.** Dwarf, with variegated foliage.

**SNOWBERRY.** New hybrid, spotted fruit, the best of the Snowberries.

**PAGODA DOGWOOD.** Alternate foliaged, very graceful. Rare plant.

**WHITE FRINGE TREE.** A striking variety. Covered in early spring with feathery white flowers.

**SWEET SHRUB.** Medium sized growth, sweet fragrance.

All of the above varieties available at \$1.00 each. One each of above (eight in all) for \$7.00.

Send for our planting booklet. Most concise, complete, available.

.....



Only in the Outdoor Living Room can there be such superb effects in decorating as nature promotes in her lavish bloom.

PLAN AN OUTDOOR LIVING ROOM THIS YEAR

# DANIELS HEDGES

Note the well trimmed Hedge of Cotoneaster on page 8

Prices at the 100 rate

25 plants or more at this rate

**BARBERRY, Thunbergs.** Best dwarf, thorny hedge. Colors beautifully in the Fall. 12-18 inches, \$12.50; 18-24 inches, \$17.50.

**BUCKTHORN.** The best sheared hedge. Can be held low or allowed to become tall. Start with bushy, heavy plants of our stock. 18-24 inches, \$12.00; 2-3 feet, \$14.00; 3-4 feet, \$16.00.

**CARAGANA.** An excellent plant for the West and the far North. When closely sheared it makes a beautiful hedge. 2-3 feet, \$15.00; 3-4 feet, \$22.00.

**COTONEASTER.** The glossy green foliage, turning to red in the Fall, makes this an excellent hedge to use. 2-3 feet, \$20.00; 3-4 feet, \$30.00.

**CURRENT, Alpine.** One of the best hedges for trying locations and shady places. Low, dwarf and dense. 12-18 inches, \$17.50; 18-24 inches, \$25.00.

**DOGWOOD, Red Twig.** For a wide hedge, tall growing, and for color, it makes an excellent planting. 2-3 feet, \$25.00; 3-4 feet, \$35.00.

**HONEYSUCKLE.** Makes a neat, compact hedge. 2-3 feet, \$25.00; 3-4 feet, \$35.00.

**LILAC.** Any of the common purple or white lilacs make excellent hedges. 2-3 feet, \$17.50; 3-4 feet, \$25.00.

**PRIVET, Lodense.** This hedge takes the place of Box for our climate. A beautiful foliage. Very low. 12-18 inches, \$17.50; 18-24 inches, \$22.50.

**ROSES.** Hansa or single red can be used. 2-3 feet, \$25.00.

**SPIREA VAN HOUTTEI (Bridal Wreath).** Makes an excellent informal hedge. 2-3 feet, \$20.00; 3-4 feet, \$22.50.

## HARDY VINES

**BITTERSWEET.** Glossy green foliage. Be sure to plant two or more vines to secure fruit. 2 year, 50c; 3 year, 75c.

**BOSTON IVY.** Small leaved, clinging vine. It is replacing Engelmannii. Turns purple and bronze in the Fall. 2 year, 50c each; 3 year, 75c each.

**CLEMATIS, Jackmani.** The best purple clematis. Requires a trellis. Beautiful when in bloom. 2 year No. 1, \$1.00 each.

**CLEMATIS, White.** A sweet scented, vigorous grower. Blooms in late Summer. 2 year, 50c; 3 year, 75c.

**GRAPE, Beta.** Produces lots of fruit and grows fast. 2 year, 40c each.

**SCARLET HONEYSUCKLE.** Flowers make this unusual in color. Blooms throughout a long period. 2 year, 50c each; 3 year, 75c each.

**VIRGINIA CREEPER, Engelmani.** The best clinging vine. Colors scarlet in the Fall. See our low price of 3 year, 50c each (3 for \$1.00).

## NEW CLEMATIS

**CLEMATIS, The New Gypsy Queen.** A new purple, rich velvety color, superior to the Jackmani. One of the best purple varieties. 2 year, \$1.00; 3 year, \$1.35.

The Following other new Clematis also are offered at above prices. Try them.

**Ramona.** Blue.

**Baron Veillard.** Pink.

**Mme. Edward Andre.** Red.

**Villa de Lyon.** Red.



*Boston Ivy*

## HARDY ROSES

THEY DO NOT REQUIRE COVERING

High quality plants—50c each; 6 for \$2.50

**Blanc de Coubert.** Double white.

**Belle Poitevine.** Rose pink.

**Conrad F. Meyer.** Silvery pink.

**F. J. Grootendorst.** Small red clusters, ever-blooming.

**Hansa.** The best double everblooming, fragrant red bush rose.

**Sir Thomas Lipton.** White, everblooming, double; splendid foliage plant.

THE ABOVE ARE ALL OF  
RUGOSA CROSSES

**Hugonis.** New Chinese Yellow. Hardy, with fine foliage. Blooms profusely.

**Harrison's Yellow.** The old-fashioned, small, double, yellow rose. A favorite.

**Persian Yellow.** Canary yellow, more of hybrid tea foliage.

## CLIMBING ROSES

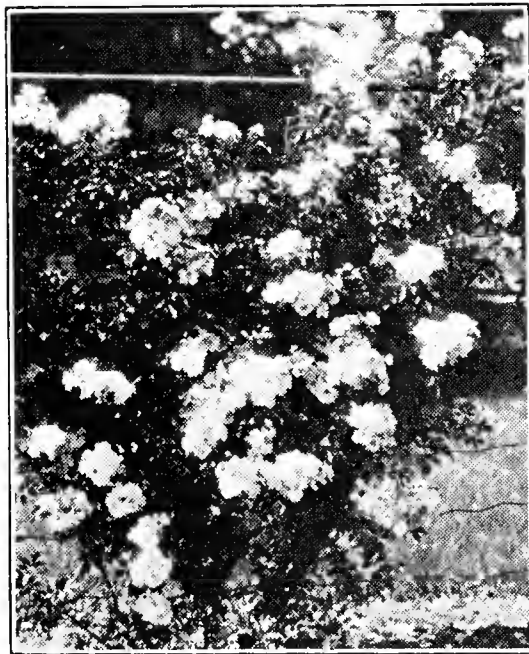
50c each; 6 for \$2.50

**Dr. Van Fleet.** Pink. A long stem for cutting; good bloomer.

**Excelsa.** Clusters of red flowers. The best climber.

**Gardenia.** Yellow; excellent climber.

**Pauls Scarlet.** The strongest of the fragrant red climbers.



*Excelsa*



*Red Radiance*

## HYBRID PERPETUAL ROSES

The Hybrid Perpetual Roses usually bloom throughout June, but often if fed well will continue throughout the summer. Both perpetual and tea roses require covering.

High quality plants—50c each; 6 for \$2.50

**Capt. Hayward.** Scarlet flowers; large, fragrant.

**Clio.** Large double pink; very fragrant.

**George Arends.** Deep petaled, soft pink; splendid foliage.

**J. B. Clark.** Dark scarlet. Very double. Trim severely.

**Magna Charta.** The old-fashioned, well liked, bright pink rose; blooms profusely.

**Mrs. John Laing.** Soft pink; free flowering.

**Paul Neyron.** One of the favorite roses; large, double, lilac rose.

## TEA ROSES

60c each except as noted

Bloom throughout the season

**Gruss an Teplitz.** Small red; excellent bloomer.

**President Herbert Hoover.** A gorgeous new rose. The flower holds a blending of many rich colors, changing from a deep red apricot in bud to shadings of gold, orange and copper. \$1.50 each.

**Red Radiance.** Deep red; excellent bloomer.

**Soiel D'or.** Gold and orange yellow.

**Souvenir de Claudius Pernet.** A pure sunflower-yellow. Strong grower. \$1.25 each.

**Talisman.** New. A brilliant shading of gold, apricot, yellow and deep pink. \$1.50 each.

**Willowmere.** Salmon pink, shaded yellow.

## CUSTOMERS

are impressed with the care we give our plants. No thin, crowded or straggly plants go out from "The Daniels Nursery."

"They are given room to grow."

# DANIELS HARDY PERENNIALS

Freshly dug from the field

Customers like our field grown and freshly dug perennials, because they get results. We feel that storing perennials in bins or in the basement after digging reduces their vitality, and in many cases causes their death or retards their growth.

All perennials listed at 25c each are \$2.50 per dozen

All perennials listed at 30c each are \$3.00 per dozen

All perennials listed at 35c each are \$3.50 per dozen

(R)—indicates suitable for Rock Gardens

**ACHILLEA. Rosy Milfoil.**

Dense heads of pink flowers. Finely cut, deep green foliage. June to September. 18 inches (R), 25c.

**ACHILLEA. Ball of Snow.**

New. Snow white flowers. Superior to "The Pearl." June to September. 18 inches (R), 25c.

**ACONITUM fischeri.**

**Monkshood.** Large, hood-shaped flowers. Blue. September and October. 24 to 36 inches, 35c.

**ACONITUM. Spark's Variety.**

The deepest blue of all. Borne on tall branched spikes. July and August. 3 feet, 35c.

**ALYSSUM argenteum.** Yellow flowers. Foliage silver lined. June to August. 15 inches (R), 30c.

**ALYSSUM saxatile compactum.** Free blooming.

Bright yellow flowers in early spring. Attractive gray foliage. 8 to 12 inches (R), 25c.

**ANCHUSA italica. Dropmore.**

Beautiful brilliant blue flowers on tall spikes. Leaves large, grayish-green, heavily pubescent. June to August. 4 to 5 feet, 25c.

**ANEMONE Japonica. Japanese Wind Flower.**

Rapid in growth, profuse in bloom. Large open flowers. September to November. 2 to 3 ft., 35c.

**ANTHEMIS kelwayi. Hardy Marguerite.**

Daisy-like flowers of golden yellow. Fragrant. Handsomely cut foliage. June to October. 2 feet, 25c.

**AQUILEGIA alpina. Columbine.**

Dark blue flowers. June to August. 12 inches (R), 25c.

**AQUILEGIA. Mrs. Scott Elliot hybrids.**

Delicate flowers in many colors. Long spurred. June to August. 24 inches, 25c.

**ARABIS alpina. Rock Cress.**

Masses of pure white flowers densely cover this plant. April and May. 6 to 8 inches (R), 25c.

**ARMERIA maritima. Sea Pink or Thrift.**

Innumerable pink or rose flowers in dense heads, on stiff, wiry stems. May and June. 9 inches (R), 35c.

**ASTER, Hardy. Michelmas Daisy.**

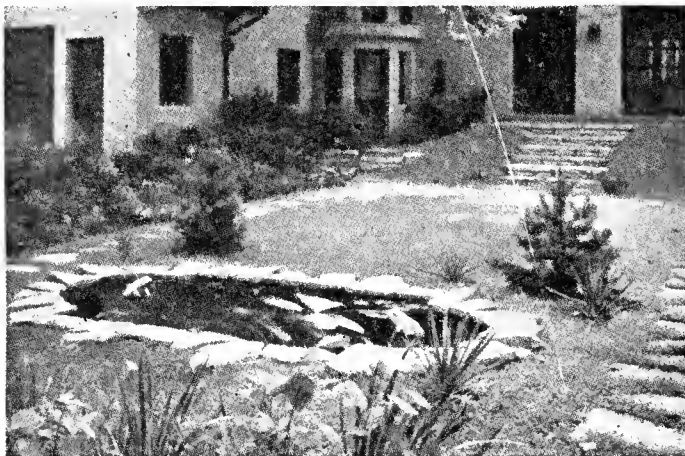
Novæ angliæ. Bright purple-violet. September and October. 5 feet, 25c.

**ASTER, St. Egwin.**

Soft rose pink. September and October. 3 feet, 25c.

**ASTILBE America. Spirea.**

Many branched feathery heads of lilac-pink flowers. June and July. 3½ feet, 50c.



*Formality gives to the outdoor living room a touch of stateliness. Here we may find peace and contentment in the harmony of green things growing—and the flowers of summer and spring.*

**BAPTISIA australis.**

**False indigo.** Dark blue pea-shaped flowers. Dark green, deeply cut foliage. June. 2 feet, 35c.

**BOLTONIA asteroides.**

White, single, aster-like flowers. August and September. 5 to 6 feet, 25c.

**BOLTONIA latisquama.**

Bears masses of lovely lavender-pink flowers. Not so coarse as the white variety. August and September. 4 to 5 feet, 25c.

**CAMPANULA carpatica.**

**Hare Bell.** Flowers clear blue, on wiry stems, growing in compact tufts. July and August. 6 to 12 inches (R), 25c.

**CAMPANULA persicifolia.** Erect spikes of large, cup-shaped blue flowers. June to July. 2-3 ft., 25c.

**CENTAUREA montana.** Perennial Cornflower.

Large, violet-blue flowers. July to September. 1½ feet (R), 25c.

**CERASTIUM tomentosum.** Carpet of white flowers and silvery green foliage. June. 6 inches (R), 25c.

**CHRYSANTHEMUM maximum. Shasta Daisy.**

White flowers, large, with yellow centers. Long stems, suitable for cutting. July to September. 12-15 inches, 25c.

**CONVALLARIA majalis. Lily of the Valley.**

White, dainty, bell-shaped small flowers. Very fragrant. May and June. 8-10 inches (R), 25c per clump.

**COREOPSIS lanceolata grandiflora. Tickseed.**

Large, bright yellow flowers. Stems long, graceful. Slender light green foliage. Blooms all summer. 2 feet, 25c.

**CREEPING JENNY.**

Glossy green leaves—creeping—yellow flowers. Excellent for ground cover and rockery work. 25c.

**DELPHINIUM, Belladonna.**

Light sky-blue. Very free blooming. June to October. 3 feet, 25c.

**DELPHINIUM, Bellamosa.**

A dark blue strain of the Belladonna. 25c.



**DELPHINIUM Chinense.** Dwarf variety. Dark blue flowers. Feathery foliage. 12-18 inches (R), 25c.

**DELPHINIUM Chinense alba.** A pure white form of chinense. (R), 25c.

**DELPHINIUM Hybrids.** Blackmore and Langdon's and other choice hybrids. Colors ranging from pale blue to deep indigo and shades of rose. 25c.

**DIANTHUS barbatus.** Sweet William. An old-fashioned flower. Producing great masses of bloom in various colors of red, rose and white. May and June. 1½ feet, 25c.

**DIANTHUS deltoides brilliant.** Maiden Pink. Dwarf plant, crimson-red flowers, compact deep green foliage. May and June. 6 inches (R), 25c.

**DIANTHUS plumarius.** Clove Pinks. Varying shades of pink, purple and white. Fragrant clove-scented flowers. Flowers bloom all Summer. 9 inches (R), 25c.

**DICENTRA exima.** Plumy Bleeding Heart. A dwarf grower. Heart-shaped, rose-colored flowers. Finely cut foliage. May to September. 12 inches (R), 40c.

**DICENTRA spectabilis.** Bleeding Heart. An old-fashioned flower. Long racemes of heart-shaped pink flowers. May and June. 2-2½ feet, 35c.

**DICTAMNUS fraxinella.** Gas Plant. A splendid flowering plant. Pink and white bloom. Fragrant. Attractive dark green foliage. June and July. 2-3 feet, 35c.

**DIGITALIS.** Giant Shirley Foxglove. Bell-shaped blossoms. Colors range from white and pink to deep rose and blue. Flower heads about three feet long. June and July. 3-5 feet, 35c.

**ECHINOPS ritro.** Globe Thistle. Thistle-like plants with globular-shaped metallic blue flowers. Fine for dried bouquets. July to September. 3-4 feet, 25c.

**FUNKIA.** Plantain Lily. Lilac blue, drooping flowers, narrow green leaves. July and August. 15 inches (R), 25c.

**FUNKIA variegata.** Broad, green, glossy leaves, beautifully margined with white. Blue flowers. July. 15 inches (R), 35c.

**GAILLARDIA.** Blanket Flower. Gay blooms with reddish-brown centers and yellow daisy-like petals ringed with red. Fine for cutting. June to November. 18-24 inches, 25c.

**GEUM, Mrs. Bradshaw.** Orange-red bloom throughout season. 12-18 inches, 25c.

**GRASSES.** Hardy Ornamental Grass. Very graceful, long narrow leaves striped with white and sometimes striped with pink and yellow. 35c.

**GYSOPHILA paniculata.** Baby's Breath. The tiny white blossoms clustered together as they



*Hybrid Delphinium*

grow from a globular plant of misty-white, gauze-like appearance. August and September. 2-3 feet high, 25c.

**GYSOPHILA, Bristol Fairy.** Everblooming White, double. Fine for cutting. 60c.

**HEMOROCALLIS FLAVA.** Yellow Day Lily. A most useful and attractive plant in the border. Has pleasing yellow trumpet-shaped flowers, produced in profusion during long periods. 25c.

**HELENIUM.** Riverton Gem. Sneezewort. New. Old gold suffused with bright terra cotta, changing to wallflower-red. August to October. 2½-3 feet, 35c.

**HEUCHERA sanguinea.** Coral Bells. Graceful, delicate, slender stalks bearing small bell-shaped coral-red flowers. Leaves form a low tuft of green about 6 inches high. July to September. 18 inches (R), 35c.

**HOLLYHOCK, Althea rosea.** Allegheny Mixed. An old favorite. Large camellia-like flowers that form perfect rosettes of beautiful colors along stems, often growing six and seven feet tall. July and August. Single flower. 25c.

**HOLLYHOCK, Double Flowering.** Immense double flowers, salmon, yellow, red, bright rose, white. 25c.

**IBERIS, Sempervirens.** Hardy Candytuft. Dense flat heads of white flowers completely cover the attractive evergreen foliage in early spring. May. 8-10 inches (R), 35c.

## IRIS

### GERMAN OR FLAG IRIS

**Ambassadeur (92-91).** 42 inches. Late. Standards a fascinating smoky, velvety color. Falls, velvety purple maroon. Beards and style yellow. A magnificent and regal flower. 25c.

**Flavescens.** A delicate shade of yellow or cream. Very desirable planted among shrubbery or where a yellow note is wanted in perennials. 25c.

**Juanita (78-81).** Clear blue-violet. Tall, free flowering and very fragrant. One of the best for cutting and massing. 25c.

**Lord of June (88-78).** Fragrant. The standards are of soft lavender blue and the falls rich, violet-blue. Considered the finest of its color. 25c.

**Madam Chereau (69-70).** 36 inches. Early. The white standards are suffused over nearly the entire surface with a beautiful aniline blue. The white falls are delicately edged with the same color. Very fragrant. 25c.

**Queen of May.** This old, early flowering iris is still one of the most charming pink varieties. The arched standards and drooping falls are both soft rose to reddish purple. Growth vigorous. Delightfully fragrant. 35c.





**Souv. de Mme. Gaudichau** (91-98). 40 inches. This is the largest, darkest, and finest of the dark purples. One of the scarce varieties but yet reasonable enough for all to enjoy. Fragrant. 25c.

**San Souci.** Standards a bright gold tinge. Falls brown with bronze shadings. A common yet very popular variety. 25c.

**White Knight** (79-80). 24 inches. Beautiful white flowers of waxy texture, with delicate throat markings. A flower of fine form and sweetly scented. 50c.

**EARLY DWARF IRIS—Iris Pumila**

These little early bloomers do not grow over 5 inches, and are well adapted to borders and to rock gardening.

**Sambo.** Dark violet blue (R), 25c.

**Excelsa.** Pale lemon-yellow (R), 25c.

**Fairy.** Fragrant early white (R), 25c.

**SIBERIAN IRIS**

They are the easiest culture. Very prolific, an established clump often producing 50 or more flowering stalks. They grow on long stems and have ornamental, grass-like foliage and are excellent for cutting.

**Blue King.** 42 inches. Deep blue-purple. 25c each.

**Snow Queen.** 36 inches. New. Snow white. 25c each.

**LILIES**

**Auratum (Gold Banded Japan Lily).** One of the finest large fragrant flowers, of a delicate ivory white color, studded with chocolate-crimson spots and striped through the center a golden yellow. July to September. 3-5 feet, 60c.

**Candidum (Madonna Lily).** This is the old-fashioned garden lily, and one of the most beautiful. A very striking effect can be produced by planting Madonna Lilies with Delphinium. Plant only early in the Fall. 50c.

**Coral Lily (L-tenuifolium).** A small slender lily, 18 inches high, with bright scarlet flowers. One of the prettiest little lilies in cultivation. Early June. 50c.

**Elegans.** This beautiful lily is of a rich orange-brown hue that sometimes approaches crimson. Flowers are large and striking in appearance and are borne over a long season. Does well even under the most adverse conditions. 50c.

**Regale (The Regal Lily).** It is absolutely hardy and is becoming a great favorite in the garden. Flowers are white, slightly suffused with pink, with a beautiful shade of canary yellow at the center. Blooms in July. 5-6 inches, 25c; 7-8 inches, 50c.

**Speciosum Magnificum.** One of the best deep pink lilies for late Summer bloom. 75c.

**Tigrinum Splendens (Double Tiger Lily).** By far the best form of Tiger Lily. It is tall with handsome large flowers and healthy stalks. 25c.

**LEONTOPODIUM Edelweiss.** Silvery white star-like leaves in clusters. Flower small, yellow. From the Alps mountains. 4-6 inches (R), 50c.

**LIATRIS (Blazing Star).** Known as Kansas Gay Feather. Blooms with long rich purple spikes of flowers. 25c.

**LINUM Perenne. Perennial Flax.** Pale blue, pearl-like flowers. Light foliage, graceful. June and July. 12-18 inches (R), 25c.

**LUPINUS polyphyllus.** Beautiful spikes of clear blue, rose, or white blossoms. June and July. Stems 3 feet high. 30c.



*The home where flowers live is always more delightful to children and grown folks alike. Hardy flowers are easy to grow and their beauty increases yearly*

**LYCHNIS alpina.** A dwarf plant producing rose-pink blossoms. June. 10 inches (R), 50c.

**LYCHNIS chalconica. Maltese Cross.** Large heads of scarlet flowers. June and July. 2-2½ feet, 25c.

**MONARDA didyma. Oswego Tea. Cambridge Scarlet.** Bright crimson-scarlet flowers. Sweet-scented foliage. June to September. 3 feet, 25c.

**MYOSOTIS palustris. Forget-me-not.** Dainty blue flowers with yellow eye. Profuse bloomer. May to September. 6-10 inches (R), 25c.

**NEPETA mussini. Catnip or Ground Ivy.** Lavender flowers, low trailing habit, gray foliage. June. 12-18 inches (R), 25c.

**OENOTHERA Fraseri. Evening Primrose. Sundrop.** Golden-yellow flowers. July to October 12 inches (R), 25c.

**OENOTHERA Youngi.** Strong, stocky, large-leaved plant. Large yellow flowers. June to August. 2 feet, 25c.

**PACHYSANDRA terminalis. Japanese Spurge.** A dense mat of evergreen foliage, thick, rubber-like lustrous dark green. Bears spikes of light-colored flowers in May and June. 6-9 inches (R), 35c.

**PAPAVER. Oriental Poppy.** Deep crimson-scarlet, cup-shaped blooms. May and June. 2½ feet, 25c.

**PENTSTEMON barbatus torreyi. Beard Tongue.** Bushy plants bearing Gloxiana-like scarlet flowers on long, slender spikes. June and July. 3½ feet, 25c.

**PEONY**

3 to 5 eye, 50c

5 to 8 eye, 75c

except where noted

**Couronne d'Or.** 8.1. Snow white with golden stamens. Large blooms. Late. Fine for cutting.

**Edulis Superba.** 7.6. Mauve-pink. Early. Large flowers. Rose type.

**Festiva Maxima.** 9.3. Splendid early white. Very large. Center flaked crimson.



**Karl Rosenfield.** 8.8. Rich crimson. Immense flowers. Very free bloomer. Midseason. \$1-\$1.50 each.

**Rose Fragens.** Dark rose pink. Very fragrant.

**Rubra Superba.** 7.2. Deep crimson. One of the best late reds.

## PHLOX

25c each except where noted.

**B. Compte.** French purple.

**Baron von Deedem.** New. Scarlet-red flowers in masses.

**Beacon.** Brilliant cherry-red, 35c.

**Bridesmaid.** Pure white with crimson eye.

**Elizabeth Campbell.** Salmon-pink, 35c.

**Enchantress.** More vigorous than Campbell. Soft salmon-pink.

**Jules Sandeau.** Pure watermelon pink.

**Jenkins, Mrs.** Early white.

**Konigshafer.** Orange-red.

**Lingard, Miss.** Earliest white, beautiful.

**Lothair.** Bright crimson.

**Princess Elizabeth.** White with red eye.

**Professor Schleman.** Clear pink.

**Stroblein, George.** Orange-red.

**Thor.** Beautiful salmon-pink. Aniline-red eye.

## PHLOX SUBULATA

### MOSS PINK

An early, Spring flowering type with pretty, moss-like green foliage. In April and May the plants are covered with masses of bloom. An ideal ground cover and rockery plant.

**Amoena.** A low species, native to dry hills and barrens. Flower pink. (R), 30c.

**Fairy.** Pale blue with dwarf purple eye. A beautiful little rock plant. (R), 30c.

**Vivid.** Bright pink with fiery red eye. One of the creeping phlox. (R), 30c.

**Divaricata Canadensis.** Known as our Native Sweet William. It blooms from early April to May, producing large, fragrant, lavender flowers. (R), 30c.



Blue; dense, bushy growth. June to October. 18 inches (R), 25c.

**PYRETHRUM hybridum.** Painted Daisy. Bright pink, rose and red daisy-like flowers borne elegantly on long, graceful stems. May and June. 2½ feet, 25c.

**PYRETHRUM uliginosum.** Fall Daisy. Large white flowers. August and September. 5 ft., 25c.

**RANUNCULUS repens.** Buttercup. An attractive bright yellow, double bloom, resembling pom-pom chrysanthemums. May and June. 12-18 inches, 25c.

**RUDBECKIA laciniata.** Golden Glow. Large, double golden-yellow flowers. Dahlia shaped, borne on tall, sturdy stems. August to October. 5-6 feet, 25c.

**RUDBECKIA purpurea.** Purple Cone Flower. Reddish-purple flowers with large cone-shaped center of brown. July to October. 3-4 feet, 25c.

**SALVIA pitcheri.** Meadow Sage. Branching habit and large flowers of gentian blue color. August to October. Spikes 3 to 4 feet. 35c.

**SCABIOSA caucasia.** Pincushion Flower. Symmetrical round heads of soft shades of lavender from which the stamens stand up prominently, reminding one of miniature pincushions. June to September. 18 to 24 inches. 35c.

**SEDUM acre.** Stonecrop. Bright green, trailing carpet plant with yellow blossoms. Thrives under most adverse conditions. June and July. 3 inches (R), 25c.

**Album.** Foliage green; flowers white. May to July. 3 inches (R), 25c.

**Sarmentosum.** Yellow flowers, more rapid grower than S. acre. June and July. 3 inches (R), 25c.

**Spectabile.** Erect growing. Pink flowers. Thick, glaucous leaves. August and September. 18 inches (R), 25c.

**SPIREA** (see Astilbe).

**STATICE latifolia.** Sea Lavender. Beautiful everlasting with spreading pinnacles of lavender-colored flowers. Attractive in the garden and for Winter bouquets. August and September. 2 feet, 35c.

**TROLLIUS.** Globe Flower. Similar to the buttercup but has large orange-yellow flowers. 18-24 inches. May to August. 25c.



*Provides the ideal background for children's play*

**VERONICA longifolia.** Speedwell. One of the most attractive violet-blue flowers. Flowers borne in long, compact spikes. August and September. 2 feet, 25c.

**VIOLA. Jersey Gem.** Tufted Pansy. Dwarf habit. Rich violet color. Slightly perfumed. Attractive roundish foliage. May to September. 8 inches (R), 25c.

**VIOLA, Yellow.** Dwarf. Blooms throughout season. 25c.

**YUCCA filamentosa.** Adam's Needle. Tall spikes of large, drooping cream-white flowers. Long, narrow, sword-like foliage. July. 4 feet, 35c.



**GLADIOLI**

10c each, except where noted

- Joe Coleman. Rich red.
- Mrs. F. C. Peters. Lilac-rose, 15c each.
- Albania. Large, snow white.
- Scarlet Princeps. Intense scarlet.
- Sweet Lavender. Beautiful light lavender. Purple blotch.
- Romance. Dark salmon-rose, yellow center.
- Mary Pickford. Delicate creamy-white. Sulphur yellow throat.
- Schwaben. Smooth sulphur-yellow.
- Giant Nymph. Pink, with creamy-yellow throat.
- Phenomenon. Early. Soft salmon-rose blending to creamy throat. Tall, 25c each; \$2.50 for 12.
- W. H. Phipps. A masterpiece. Flowers of immense size. Beautiful shade of pink suffused with salmon rose. Lower petals crowded with ruby dots. 25c each; \$2.50 for 12.
- Daniels Blend. An assortment of varieties for the customer wishing something for cutting. 50c per dozen, all good varieties.

**DAHLIA**

- Jersey Beauty. Formal decorative. One of the most popular of Dahlias. Glorious flower of eosine pink, a color difficult to adequately describe. Unrivalled as a cut flower or for exhibition. \$1.00 each; 3 for \$2.75.
- Mrs. I. de Ver Warner. Formal decorative. Orchid-like. Very popular. Mauve-pink petals. A continuous bloomer. Is one of the best of its class for all purposes. \$1.00 each; 3 for \$2.75.
- Sagamore. A superb cut flower of pleasing size and perfect decorative form. Profuse bloomer of long season. A long keeper. Soft saffron yellow with a faint rose undertone at base. A compact center enriched by ruddy apricot. \$1.00 each; 3 for \$2.75.
- Jack Rose. Decorative. A strong free bloomer, beautiful velvety deep red. 25c each; 3 for 60c.

**OUR BIG PERENNIAL OFFER**

All orders are sent carrying charges "collect." Where cash remittance is made at time of ordering, we will ship and pay transportation charge.

**Extra Large Perennials**

We have some exceptionally nice large plants grown for display purposes—well rooted—large clumps. These plants have been allowed plenty of room to develop and are a real bargain for the quality.

We can furnish them only in the following varieties.

Be sure to specify "Extra Large Perennials" when you place the order.

The Iris on this list can be separated into three or more corms.

- |                              |                      |
|------------------------------|----------------------|
| Achillea roseum              | Alyssum argenteum    |
| Achillea Ball of Snow        | Anchusa italica      |
| Anthemis—Hardy Marguerite    |                      |
| Aquilegia—Mrs. Scott Elliott |                      |
| Campanula carpatica          | Ambassador Iris      |
| Cerastium tomentosum         | Madam Chereau Iris   |
| Delphinium belladonna        | San Souci Iris       |
| Delphinium hybrids           | Sambo Iris           |
| Dianthus—clove pinks         | Blue King Iris       |
| Blue plantain lily           | Yellow Siberian Iris |
| Gaillardia                   | Lychnis chalconica   |
| Hemorocallis—orange          | Pentstemon barbatus  |
| Pyrethrum Hybridum—dark      |                      |
| Rudbeckia laciniata          |                      |

You may select six or more of each kind and the price is only \$2.50 per dozen.

**Consult Us as Your Nurseryman**

You can consult us with confidence. Your problems will be treated fairly. We are interested in the success of your plants. Our advice may be had at any time by any purchaser.

A mere sale does not conclude our transaction.



**SUMMER PLANTING**

We have perfected a method by which we can do planting of all varieties of plants—except shade trees—the entire summer, within a reasonable distance of our nursery. We are advising our customers to allow us to plant such orders to secure the best results. We must have at least three days' notice to secure proper preparation of most plants. Remember—we can plant Shrubs, Evergreens and Perennials all summer. Call us. We have an attractive offer to make. Your garden may be made beautiful for that special party. This summer planting service enables those who complete new homes to obtain immediate planting effects. Call us—  
Minneapolis—Gladstone 2283  
Long Lake—8648

## LARGE TREE ORDERS

In addition to the fact that we are offering only well trained, root pruned trees, at reasonable prices, we also make a special price on orders of 10 or more trees of each variety.

### ASK US ABOUT THIS.

Many of our prices on trees are reduced as much as 20%

**AMERICAN WHITE ASH.** A tall-growing native tree. Very straight with broad, round head and dense foliage. Almost insect-proof. 6-8 feet, 75c; 8-10 feet, \$1.00; 1½ inches, \$2.00; 2 inches, \$2.50 each.

**BASSWOOD (American Linden).** A rapid-growing, large-sized tree. Forms a broad, round-topped head. Flowers white. 6-8 feet, 75c; 8-10 feet, \$1.00; 1½ inches, \$2.00; 2 inches, \$3.00 each.

**BIRCH, White.** A beautiful, graceful, upright-growing tree, famed for its attractive white bark. A good lawn tree. 5-6 feet, 75c; 6-8 feet, \$1.00; 8-10 feet, \$1.50; 1½ inches, \$3.00 each.

**BIRCH, Cut-leaf Weeping.** One of the most graceful and admired of all lawn trees. It is tall, slender, with drooping branches. Silvery white bark and finely-cut foliage. **Note the low prices this year.** 5-6 feet, \$1.50; 6-8 feet, \$2.25; 8-10 feet, \$3.25; 1½ inches, \$4.25 each.

**BUTTERNUT.** A rapid growing, attractive native tree. Nut fruit produced in abundance. Excellent for lawn or grove planting. Colors in the Fall. 5-6 feet, \$1.00; 6-8 feet, \$1.50 each.

**CRAB-APPLE, Dolgo.** The most attractive of all apple trees in Fall. Makes a suitable lawn tree. The fruit is excellent for jelly. Blossoms creamy white. Specimen trees are: 4-5 feet, 75c; 5-6 feet, \$1.00 each.

**CRAB-APPLE, Hopa.** A red blossom crab-apple, producing red fruit and coloring beautifully in the Fall. This makes an excellent lawn or shrubbery border tree. Specimen trees are 4-5 feet, \$1.00; 5-6 feet, \$1.50 each.

**ELM, American White.** America's most popular tree for shade and street planting; attains a height of from 60 to 80 feet. Rapid in growth and long-lived. 5-6 feet, 50c; 6-8 feet, 75c; 8-10 feet, \$1.00; 1½ inches, \$2.00; 2 inches, \$2.50; 2½ inches, \$3.50; 3 inches, \$5.00 each.



*A place for contentment and repose*

**ELM, Chinese.** A hardy extremely rapid growing tree. Has small leaves—many-branched compact form. For dry sections of the West it is the best tree known. It makes a fine shade or windbreak tree. 4-5 feet, 40c; 5-6 feet, 50c; 6-8 feet, 75c; 8-10 feet, \$1.00; 1½ inches, \$2.00 each.

**ELM, Minneapolis.** This tree is a selected new variety coming from the famous narrow-formed street tree designated as the best in Minneapolis. It is now recognized as the best form for street planting. Uniform in habit of growth, rapid, and of majestic structure. We recommend this splendid tree and have placed the price right where you can now buy it. 6-8 feet, \$1.25; 8-10 feet, \$1.75; 1½ inches, \$2.25; 2 inches, \$3.00 each.

**MAPLE, Sugar.** Our native, highly colored maple. It produces a well-shaped tree. Perfectly hardy and fast growing. Prices are way down on this tree this year. 6-8 feet, \$1.25; 8-10 feet, \$2.00; 1½ inches, \$3.00; 2 inches, \$3.50 each.

**MAPLE, Soft.** A hardy, fast-growing tree. Grows to a large size, producing quick shade. Free from pests. 5-6 feet, 50c; 6-8 feet, 75c; 8-10 feet, \$1.00; 1½ inches, \$2.00; 2 inches, \$2.50; 2½ inches, \$3.50; 3 inches, \$5.00 each.

**Maple, Skinners Cut-leaf.** A silver maple with beautifully cut foliage. A rapid grower whose branches droop, forming a nice effect on the lawn. 6-8 feet, \$1.75; 8-10 feet, \$2.00; 1½ inches, \$2.50; 2 inches, \$3.00; 3 inches, \$4.00 each.



*Trees form the background for play*

**MOUNTAIN ASH, European.** One of the most popular of all ornamental trees. White flowers produced in the Spring, followed by red fruits, remaining into the Winter. 5-6 feet, 75c; 6-8 feet, \$1.00; 8-10 feet, \$1.50; 1½ inches, \$2.00; 2 inches, \$3.50 each.

**MOUNTAIN ASH, Swedish.** A new tree grown from a hardy strain. Imported from a severe climate. Excellent as an ornamental. 5-6 feet, \$1.75; 6-8 feet, \$2.50 each.

**MOUNTAIN ASH, Weeping.** This is a grafted tree which produces long, drooping branches. Fruits, also borne on the tree. An odd ornament, 3 year heads on a 7-foot standard, \$3.00 each.

**POPLAR, Bolleana.** A very desirable, slender tree. Gray foliage under-surface of leaf. Fast growing but does not produce as heavy a tree as **Lombardy**. Special low prices: 6-8 feet, \$1.00; 8-10 feet, \$1.50; 1½ inches, \$2.50; 2 inches, \$3.50 each.

**POPLAR, Lombardy.** A hardy quick-growing tree of great value where you desire a slender

upright form. Dense foliage, making it a good screen. We are going down to rock bottom on price this year. 5-6 feet, 50c; 6-8 feet, 75c; 8-10 feet, \$1.00; 1½ inches, \$2.00; 2 inches, \$2.50 each.

**POPLAR, Norway.** A hardy, fast-growing tree. For quick screens or windbreak plantings it is one of the best. Our prices are right. 6-8 feet, 75c; 8-10 feet, \$1.00; 1½ inches, \$2.00.

**WALNUT, Black.** A hardy nut tree that should be in every home grounds. Splendid both for shade and ornamental plantings. The immense value placed on these trees for manufacturing purposes has depleted the supply of large trees. Here is a chance to make a real investment that won't depreciate: 5-6 feet, \$1.00; 6-8 feet, \$2.00 each.

**WILLOW, Niobe.** A golden bark tree that is one of the most graceful for lawn planting. Makes an excellent screen and is long lived. We have a splendid stock of these trees at bargain prices. 5-6 feet, 50c; 6-8 feet, \$1.00; 8-10 feet, \$1.50; 1½ inches, \$2.50 each.

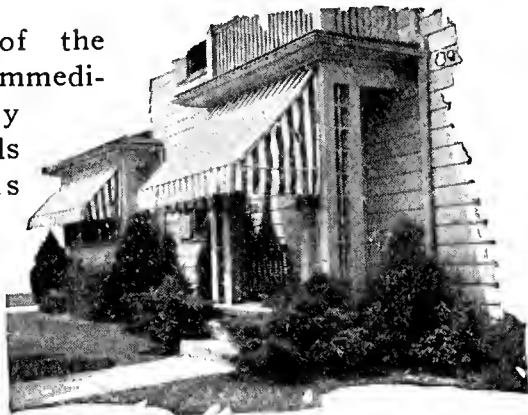
## “LARGE TREES”

Aladdin rubbed his lamp! “Bring me shade for my new dwelling place! Surround it with the soft rustling of pale leaves and the murmur of stately pines!” Aladdin slept. In the morning he awoke to the intimate twitter of birds and the sifting of soft green light through his chamber window from a maple tree hard by.

This miracle of Aladdin's Geni cannot be passed by as belonging exclusively to the delightful realm of imagination. It can be and is performed again and again in our day. We know that trees can be brought to you and the time necessary can be measured in days — no longer in years. Let us serve you!

## YOU CAN KNOW THE JOY OF A WELL PLANTED HOME

Fresh out of the ground and immediate delivery make Daniels Evergreens Superior.



*Pfitzer juniper in the foreground*

Big reduction in prices on many varieties ranging from 25 to 35 per cent below last year.

### THE ARBOR VITAE

**AMERICAN.** The most popular of the larger growing varieties. It can be trimmed to secure compact trees or allowed to grow naturally. Dependable under any average conditions of soil and care. 2-3 feet, \$2.00; 3-4 feet, \$3.50; 4-5 feet, \$5.00; 5-6 feet, \$7.50; 6-7 feet, \$10.00 each.

**GLOBE.** A dwarf, bushy evergreen that grows naturally in a round, ball-like form. Splendid for foundation plantings. 18-24 inches, \$3.00; 24-30 inches, \$5.00.

**PYRAMIDAL.** A solid pyramid of green, compact branches which retains its shape without shearing. 24-30 inches, \$1.75; 30-36 inches, \$2.50; 3-4 feet, \$3.50; 4-5 feet, \$6.00 each.

**SIBERIAN.** A compact, dense, bushy evergreen, conical in outline. Dark rich green. The hardiest of the Arbor Vitae's. 24-30 inches, \$3.00; 30-36 inches, \$5.00.

### THE FIRS

**BALSAM FIR.** The foliage is dark green above, silvery beneath. It is widely known for its pungent odor. Should be planted in a cool, moist location. 2-3 feet, \$5.00; 3-4 feet, \$6.50 each.

### THE JUNIPERS

**CANADIAN.** A low, spreading plant; leaves are sharp-pointed and of grayish-green color. Branches silvery beneath. 18-24 inches, \$3.00; 2-3 feet, \$4.00; 3-4 feet, \$5.00 each.

**CANNART CEDAR.** This evergreen has a deep rich green tufted foliage. It makes a pyramidal specimen of medium size. Can be easily trimmed. 3-4 feet, \$7.00; 4-5 feet, \$10.00; 5-6 feet, \$14.00 each.

**PFITZER.** A graceful, broad, low evergreen with sweeping fronds of silvery green foliage. The best low evergreen for city conditions, dry locations, and also does well in shady places. 18-24 inches, \$2.50; 24-30 inches, \$4.00; 30-36 inches, \$5.00 each.

## EVERGREENS

for

### All Year Beauty

We are offering strong sheared and trained evergreens with fibrous root system produced by frequent transplanting. Our trees will insure success from the start.

All evergreens except small sizes are usually sold with solid balls of earth, containing a mass of growing roots. All evergreens listed below except bargain list on page 20 are balled and burlapped.

We carry a complete line of the hardy varieties and have them priced where you will receive real quality at a low price.

**RED CEDAR.** One of the oldest, most popular and best known evergreens. Very attractive in winter when the golden bronze of the young growth contrasts with the darker green of the older. 2-3 feet, \$2.50; 3-4 feet, \$3.50; 4-5 feet, \$5.00; 5-6 feet, \$7.50 each.

**SAVINS.** One of the best low evergreens. It forms an excellent border to taller evergreens. A valuable low plant for foundation planting. 18-24 inches, \$2.50; 24-30 inches, \$3.50; 30-36 inches, \$5.00 each.

**SILVER RED CEDAR.** The glaucous, blue color is very attractive. It adds a color contrast to landscape work. 3-4 feet, \$7.00; 4-5 feet, \$10.00; 5-6 feet, \$12.00 each.



*American Arbor Vitae*

## THE PINES

**MUGHO.** These are the low and upright forms of the dwarf pines. They can be sheared and kept low or allowed to grow larger. Exceedingly hardy. Deep green foliage with candle-like new growths. 12-18 inches, \$1.50; 18-24 inches, \$2.00; 24-30 inches, \$3.00; 30-36 inches, \$4.00 each.

**AUSTRIAN.** The needles are long and straight, with a rich dark green color. Excellent for city conditions and valuable for screen plantings. 2-3 feet, \$3.50; 3-4 feet, \$5.00; 4-5 feet, \$8.00; 5-6 feet, \$12.50 each.

**NORWAY.** A long-needled, fast-growing pine. We can offer these trees in any size for immediate effect. 2-3 feet, \$3.00; 3-4 feet, \$3.50; 4-5 feet, \$5.00; 5-6 feet, \$5.50; 6-7 feet, \$6.50 each.

**PONDEROSA.** Long needles but is a little slower growing than Norway pine. Produces a rugged landscape effect. 2-3 feet, \$3.50; 3-4 feet, \$4.50; 4-5 feet, \$6.00; 5-6 feet, \$9.00 each.

**SCOTCH.** An excellent tree for windbreak and mass plantings. Has short needles and is open in growth unless sheared. 2-3 feet, \$2.50; 3-4 feet, \$3.00; 4-5 feet, \$5.00; 5-6 feet, \$8.00 each.

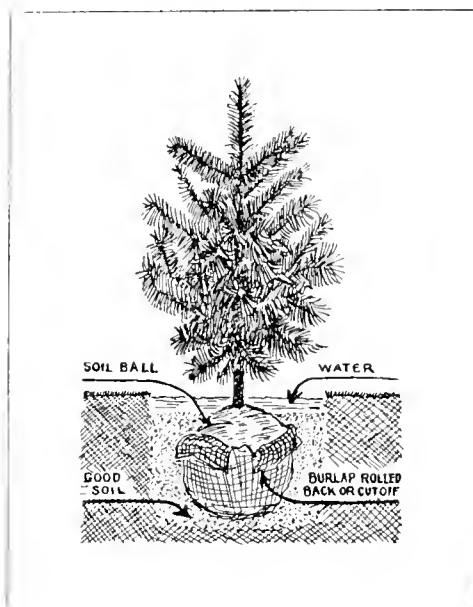
**WHITE.** This native tree adapts itself to both dry and moist soils. Needles are shorter than the Norway pine, producing a more bushy effect. 2-3 feet, \$3.00; 3-4 feet, \$4.50; 4-5 feet, \$5.00 each; 5-6 feet, \$7.50 each.



*Note the Red cedar at the entrance and the mugho pine in the foreground*

We can furnish larger evergreens in nearly every variety at very attractive prices. **Call us about** the sizes you wish quotations on and we will furnish an estimate on your needs.

## HOW TO PLANT EVERGREENS



The hole for planting an evergreen should be at least one foot larger than the ball of earth and deep enough to allow placing the tree slightly deeper than it stood in the nursery. Place the tree in the hole, loosen and pull back the burlap covering and fill the hole three-quarters full of good soil. Firm it well. Fill once or twice with water, and allow it to soak into the ground before putting on any more soil. A slight basin or depression should be left to facilitate later waterings. Water evergreens freely throughout the summer. A mulch of straw or peat will prove highly beneficial.



*Scotch Pine*

## THE SPRUCES

*Of all the trees a stately spruce  
stands out against the sky*

We have many trees like the spruce shown and are this year offering them at prices that are attractive. They come balled with earth and carefully handled.

**BLACK HILLS SPRUCE.** The hardiest of all the spruces. It is symmetrical, compact and bushy in growth. The color varies from a deep green to a blue tinge. 2-3 feet, \$2.50; 3-4 feet, \$3.50; 4-5 feet, \$5.00; 5-6 feet, \$7.50; 6-7 feet, \$12.50 each.

**COLORADO BLUE SPRUCE.** These well known trees are silvery-blue in color—beautiful specimens. They are very compact and symmetrical in growth. The branches are retained to the ground, forming perfect specimen trees. Do not plant where they will become crowded. 12-18 inches, \$2.00; 18-24 inches, \$3.00; 24-30 inches, \$4.00; 30-36 inches, \$5.00; 3-4 feet, \$8.00; 4-5 feet, \$11.50; 5-6 feet, \$18.00 each.

**COLORADO GREEN SPRUCE.** A high percentage of these trees turn blue as they increase in age. We have a large number of these nice trees that have been properly spaced in the nursery. Prices have been reduced to move these trees. 18-24 inches, \$1.25; 24-30 inches, \$2.00; 30-36 inches, \$3.50; 3-4 feet, \$4.50 each.

**NORWAY SPRUCE.** A very hardy, fast-growing tree. Has dark green foliage, presenting a compact form. Excellent for windbreaks. Grown under almost any conditions. 2-3 feet, \$2.00; 3-4 feet, \$3.50; 4-5 feet, \$5.00 each.

**WHITE SPRUCE.** A hardy fast-growing, tree resembling the Black Hills Spruce. It forms a beautiful tree which will remain branched to the ground. We have some excellent trees at low prices. 2-3 feet, \$2.50; 3-4 feet, \$3.50; 4-5 feet, \$5.00 each.

## LARGE EVERGREENS

We can furnish large trees in any size you wish. These large trees are available from our exclusive contracts. The prices we can make are attractive enough to place them within the reach of all. Anyone wanting immediate effect should secure our prices.



*Colorado Blue Spruce*

## ATTRACTIVE OFFER OF EVERGREENS

We are making a special price for small-sized evergreens, not balled. The roots come bare, and packed in moist moss. Now is the time to get a bargain. Not less than five of any selection you wish on orders accompanied by cash before April 1. BUY NOW!

	Each
American Arbor Vitæ.....18-24"	65c
24-36"	80c
Pyramidal Arbor Vitæ.....12-18"	65c
18-24"	80c
Siberian Arbor Vitæ.....18-24"	80c
Savins Juniper.....12-15"	55c
15-18"	65c
Pfitzer Juniper.....15-18"	95c
Black Hills Spruce.....24-30"	95c
White Spruce.....18-24"	85c
Norway Spruce.....24-30"	85c
Scotch Pine.....24-30"	85c



# HELPFUL HINTS

The care and culture required for young evergreen trees consist of careful cultivation—leaving an earth mulch around the trees and watering at the right time. Anybody can plant the bare rooted smaller sized evergreens successfully, if the roots are carefully spread out and the earth kept moist. Care must be taken not to expose the roots to the air for even a short time. Allow plenty of space for the young trees to properly develop.

Pruning should consist principally of the shearing or clipping the terminal growth in Spring, just when the new growth appears. This keeps the trees compact. Don't prune too late in Summer. The fast-growing pines can be pruned until the middle of July after their shoots have hardened. They will then set a cluster of buds below the cut. Never cut or top an evergreen below the point where it is showing green foliage. Always leave a fringe of foliage on the tips of the branches.

The dead that comes inside of trees in the Fall is natural. This is old growth they are shedding. In Arbor Vitæ these dead leaves can be shaken out of the tree in the Fall.

## INSECTS THAT ATTACK EVERGREENS

### Their Prevention and Removal

**RED SPIDERS** when numerous cause the evergreen foliage to turn brown. They attack the red cedars, spruces and arbor vitæ. They produce a mass of web and the inner branches turn yellow and dry. They are a sucking insect.

Spraying or dusting should be done as soon as the spiders appear, and, if possible, before the foliage turns brown. The eggs of the red spider hatch in four or five days and the young spiders become full grown in seven to eight days after hatching. Therefore, for the best results a second application of spray or dust should be given about six days after the first application in order to kill young spiders which may have hatched out since the first treatment and before they mature and commence egg laying.

Sulphur dust has proven very effective to control red spider on evergreens, provided the dust is applied on a **warm day**. Liquid lime sulphur applied at the same rate as for white pine leaf scale is also effective.

**STRAWBERRY ROOT WEEVIL** has appeared in Minnesota as a pest of evergreens. To date it has not been found in strawberry plantings in Minnesota to any extent.

The injury to the trees is done during the Fall and also in the Spring up to the middle of June. At this time the insect is in the form of a small white grub about one-fourth inch or less in length. This grub feeds on the roots. When numerous all

the small fibrous roots are destroyed and the tree dies. The first symptom of injury is a noticeable weakening of the new growth, which is usually reduced one half or more in length. When injury is more severe the entire new growth wilts. This usually occurs during the first part of June and is followed by the death of the tree.

The adult weevil appears about the third week in June. This is a light brown to very dark brown beetle about 3/16 inch long.

These weevils can be readily controlled by the use of poison bran bait applied when the weevils appear in June and before the eggs are laid. The proper time to apply this bait is as soon as 75 to 90 per cent of the insects have changed into adult weevils. The bait should be broadcast around the trees during the late afternoon or evening **so that it remains moist overnight**. The weevils feed at night and the moist bait is much more attractive than a dry bait. Two applications about eight days apart or three applications about five days apart are recommended.

### Poison Bait Formula

Bran.....	100 lbs.
Water.....	10 gals.
Sugar.....	20 lbs.
Calcium arsenate or sodium fluosilicate...	10 lbs.

Dissolve the sugar in water and mix this solution thoroughly with the bran. As soon as the bran has absorbed all the solution and is uniformly moistened, add the powdered poison and mix it thoroughly with the moistened bran.

**PINE LEAF SCALE** is most frequently found on pines and spruces but sometimes occurs on other conifers. The eggs which produce the second generation hatch during the last half of July. The young appear as tiny reddish insects which may crawl around on the foliage for several hours. They soon settle down and do not move again during their lifetime, except the males, which acquire wings on reaching maturity. After two or three weeks the characteristic white shield-like scale may be observed over the insect.

The best control was found to be liquid lime sulphur diluted 1-15 or 1-20, applied any time during the growing season, giving a very high control against these scales.

**LEAF MINER.** This insect lays its eggs along the stems of the new growth. It hatches into a small worm that cuts the needles off and lays a bundle around itself to form the containers for eggs. They do considerable damage and may ruin a tree. Spray with arsenate of lead as soon as discovered.

**THE SAW FLY** will strip all foliage off white pine and kill the tree unless controlled. A heavy arsenate of lead spray will control the insect.



*Superior Plum*

**SUPERIOR.** Of all the plums yet introduced by the State Fruit Breeding Farm, Superior is the largest. It is also one of the heaviest bearing plum varieties known. In its flavor, color, texture, size and productivity, it has proven itself worthy of its new name—Superior. It has also shown itself a splendid pollenizer for several of the other varieties.

There will not be enough of this wonderful new sort to go around this year, so we suggest placing your order as early as possible. Prices: Extra large, \$1.00 each; Large, 85c each; Standard, 75c each; 12 trees for 10 times the each price.

**FIEBING.** One of the finest of the new plums available for the Northwest. Recently awarded the \$100.00 plum prize offered by J. H. Fiebing of Milwaukee for a new variety which must be "attractive; equal to Surprise in quality, and at least 1½ inches in diameter. Tree hardy, productive, an early and regular bearer."

Mr. Charles Haralson, former Superintendent of the State Fruit Breeding Farm, who originated this variety, says: "I consider this the best plum we have for both home use and market. If I were to plant an orchard of 100 trees, 75 of them would be Fiebing." Stocks of this variety are limited, so we urge early ordering. Prices: Extra large, \$1.00 each; Large, 85c each; Standard, 75c each; 12 trees for 10 times the each price.

**UNDERWOOD.** The best of the older varieties, if any one plum can be so singled out. Early, large, hardy, with a rich red skin and firm, juicy, golden flesh of unsurpassed quality. A splendid, well formed, clean-cut looking tree.

## DANIELS QUALITY PLUMS

Throughout Minnesota and the entire adjacent Northwest one can now grow plums the equal of those produced anywhere in the United States.

These splendid originations of the State Fruit Breeding Farm, after several years of thorough testing in both home and commercial orchards, are a proven success. They are large, luscious fruits of intriguing flavor. The trees are vigorous and hardy. They bear early and when properly pollenized produce tremendous crops.

The Superior (Minnesota No. 194) has been added to our list this year. It has just been named and promises to be a leader of the entire group.

One great advance made in plum growing this past season was the determination of what are the best of the pollenizers for each of these Minnesota varieties. Our State Experimental Station has shown definitely that it is absolutely necessary to have this correct pollenization if abundant crops are to be produced.

Daniels plums are strong, vigorous, well grown trees, large for their grades, strictly true to name and priced within the reach of all.

### PRICES FOR PLUMS

(Except Superior and Fiebing)

	1	10	100
Large, 4½-6 feet.....	\$0.50	\$4.00	\$37.50
Standard, 3½-5 feet.....	.45	3.75	32.50
Extra Large, Bearing Age....	.85	7.00	60.00

## BEARING AGE TREES

Extra Large      Ready to Fruit

For Those Who Want Quickest Results

Many of you have asked us at some time or other for extra large trees that will bear fruit in the shortest possible time. To supply your wants we have grown a block of fine, two-year-old trees. Some of these have already blossomed in the nursery row, most of them have fruit buds now and should bear some fruit this summer. Without exception they should produce fruit next year. If you want the largest, finest trees available, big roots and heavy tops that will be the envy of the neighborhood and that will bear for you almost immediately, order DANIELS EXTRA LARGE, BEARING AGE TREES.

# DANIELS

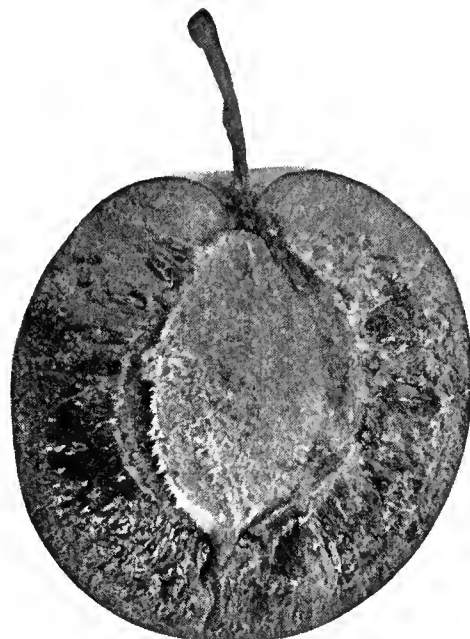
## Quality Plums

**TONKA.** Early mid-season, very heavy bearing at an early age. The fruit is large, attractive bright red color. Pit is small, entirely free-stone, quality good, flavor sweet.

**RED WING.** Mid-season. One of the largest and finest looking of the plums. Bears early, heavily and regularly. Has fruited successfully as far north as Winnipeg. Red, free-stone and of high quality.

**MONITOR.** Late. If blue ribbons were being given out, Monitor would be awarded three; yes, four. One for a vigorous, strong growing tree; one for regular bearing; another for excellent shipping and market qualities, and a fourth for delicious flavor. Color is red, slightly russeted. Unquestionably one of the finest plums.

**ELLIOT.** It would be hard to improve on Elliot for a late variety. Fruit large, attractive, bright clear red; fine flavor, splendid quality, free-stone. Since the introduction of these plums Elliot has maintained the most uniformly heavy production of the entire group. No home or commercial planting is complete without Elliot.



*Red Wing*

## PLUM SECRETS

### Proper Pollenizers Necessary for Good Plum Crops

The new Minnesota plums are conceded to be the finest race of plums ever developed for the Northwest. They are large, high quality, unexcelled for home use or market. The trees are vigorous growers and, where properly pollinated, produce tremendous crops. This past season the State Fruit Breeding Farm culminated three years of carefully conducted experiments relating to plum pollination and have announced that the Minnesota varieties must have pollen from certain other plum types in order to produce full crops.

We offer this year a splendid stock of the four best pollenizers for the Minnesota plums. They are the Americana type—all leading varieties of their class and are desirable fruits for any orchard. We cannot urge too strongly that every one who has planted or is going to plant any of the Minnesota plums put in at least one of these pollenizers to every 3 or 4 of the Minnesota plums.

#### Plum Pollenizers

The pollenizers listed below have been found to be the most satisfactory varieties for the Minnesota Plum varieties.

We will select the variety best suited to your needs.

**HANSKA.** Bright red, large; firm yellow flesh of good quality. Especially important as a pollenizer for Underwood.

**SURPRISE.** Attractive dark red plum of good quality. Its good sized fruits have long been a standard of quality.

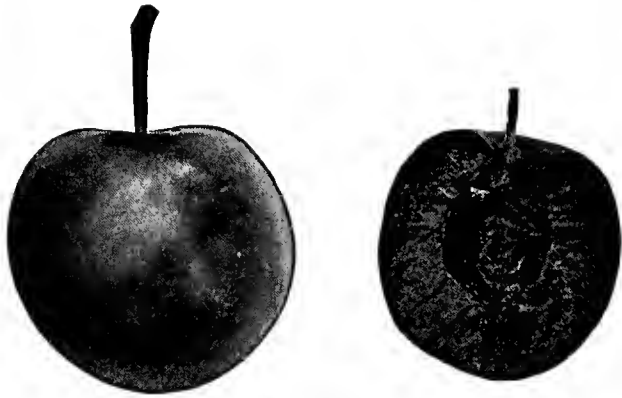
**WOLF.** Noted for great hardiness and regularity of bearing. Fruits attractive, dull crimson, good flavor and freestone. Mid-season.



DANNY  
SAYS:

Speaking of Bringing Home the  
"Bacon"—

Bringing the dollars home has been a sure and regular proceeding for those who have been growing fruits—even during the past two years. Food for thought—eh, what?



*Zumbra Cherry*

**DANIELS HARDY CHERRIES**

At last we can grow cherries in the cold north. Into these splendid new varieties have been bred the hardiness and early bearing characteristics of the sand cherry together with the high dessert and canning qualities of their true cherry parents.

We offer this year two new varieties, Oka and Tom Thumb (originations of Professor Hansen of South Dakota)—varieties which have proven of outstanding value.

**PRICES FOR ALL CHERRIES**

	1	10	100
First size .....	\$0.50	\$4.00	\$37.50
Second size .....	.45	3.75	32.50
Extra large, bearing age	.85	7.00	60.00

**OKA.** Oka has proven absolutely hardy throughout the Dakotas, Minnesota and other northern sections. It is a dwarf tree, requiring very little space, yet is a tremendous producer of large, round cherries, usually a full inch in diameter. Dark red outside, with purple, juicy meat inside. Wonderfully sweet. The best of all purple fleshed cherries.

**TOM THUMB.** The most dwarf of the cherries—about the size of a large currant bush. Fits nicely into ornamental border plantings. Bears heavily, and very early. Fruits good size, good quality, with a beautiful purple flesh and juice.

**NICOLLET.** The nearest approach to a true sour cherry available for Minnesota. Splendid for sauces and pies. Trees neat and compact and a vigorous grower. Fruits bright red—crisp flesh and small pit. For real cherry pie, plant Nicollet.

**ZUMBRA.** Probably the most widely grown and most popular of the cherries in Minnesota. Vigorous grower; early and heavy bearer. The fruits are black outside, green inside,—have a tiny cherry pit and when fully ripened are positively delicious either fresh or canned. Plant Zumbra freely!

**DANIELS HARDY PEARS**

It may sound too good to be true, but it is a fact that we can now grow pears here in the North, splendid for eating or for canning. We are doing it now; many, many others are, and you can, too!

**And Spiced Pears—How Delicious**

**ZACHMAN.** A new variety that has proven blight resistant. Larger than Mendel. Hardy as far north as Ontario. We recommend this variety for garden use. Large size trees, \$1.25 each.

**PRICES FOR DANIELS QUALITY PEARS**

	Each	Dozen
1 year.....	\$0.70	\$6.50
2 year.....	.85	7.50
2 year—extra large.....	1.00	10.00

**MENDEL.** For 27 years Mendel has withstood the rigors of our northern climate without winter injury or fire blight. It is a very productive variety. The fruit is large and hangs well to the tree. Is of first quality, sweet and juicy, and keeps well through the Fall. Mendel may be recommended for planting throughout the southern part of Minnesota.

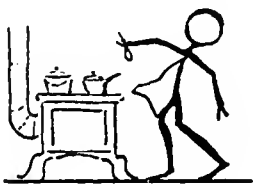
**PARKER (Minn. No. 1).** Introduced by the State Fruit Breeding Farm. The fruit is medium to large; flesh tender and of good quality. Season, late September.

**PATTEN.** This variety has proven hardy in many parts of Minnesota, South Dakota and as far north as Ontario. Thought by many to be the very best hardy pear. The fruit is of good quality, medium to large in size. Good for cooking and very fine for table use when well ripened.

**TATE NO. 2.** Originated in Ontario, Canada. It has proven itself hardy where tried in sections of western and northern Minnesota and parts of South Dakota. The fruit is of good quality, medium size. The late Father Katzener, a prominent pear grower near St. Cloud, Minn., reported it as his first choice of the thirty varieties he had tested. In 1928 he gathered 35 bushels of pears from his Tate No. 2 trees.



*Mendel Pear*



DANNY  
SAYS:

At canning time bear in mind that two of the finest home products made are Dolgo Crab and Cherry jell. Any of the cherries we list here and Dolgo when used together are so full of the stuff that makes jell that they are sure fire!

## DANIELS HARDY APPLES

Daniels apple list comprises only the very best—those most widely and officially approved of—those really suited to the Northwest. Every one is important in its season, whether it be Summer, Fall or Winter. You'll find the three newer varieties we list—Daniels Red Duchess, Dolgo, and Haralson—tremendously worth while; ones you can ill afford to be without.

Our trees are well grown, with large roots and strong two-year, well-branched tops—the best size for planting here in the middle west.

At our new low prices, this is the year to plant apples freely.

### PRICES OF ALL APPLES (except Dolgo)

	1	10	100
2 year, 4½-6 feet, standard size trees .....	\$0.55	\$4.75	\$42.50
Extra large, specially selected	.85	7.00	60.00

### Daniels Red Duchess

**A Remarkable Early Red Apple. An Improved Bud Sport of the Duchess of Oldenburg**

The Daniels Red Duchess is an early red apple that seems destined to entirely displace the old Duchess of Oldenburg. It possesses all of the good qualities of the older variety and in addition that all-important, price-commanding quality of high red color. Coming as it does at a season when there is a dearth of red apples on the market, it has proven itself a commercial variety of exceptional value.

For the past 18 years it has been under the observation of the staff of the Division of Horticulture at University Farm. Prof. W. H. Alderman, Chief of the Division, says: "It is unquestionably the most highly colored sport of the Duchess of Oldenburg known to be in existence. I can see no reason why commercial growers should continue to plant Duchess when this new sport is available in quantities to supply the demand."

**RED DELICIOUS**—We are adding this variety to our list this year for use south of Twin City area. A splendid eating apple. High quality. Colors earlier and more deeply, otherwise identical with ordinary Delicious.

### Dolgo

The most beautiful of all apple trees as well as the finest jelly crab known. The fruit is bright red, hangs in clusters, and is oblong in shape. Bears very early. Heavy producer. The one best crab-apple to plant for home or market use.

Prices: 3-4 feet, 60c each, \$6.00 dozen; 4-5 feet, 75c each, \$7.50 dozen; 5-6 feet, \$1.00 each, \$10.00 dozen.

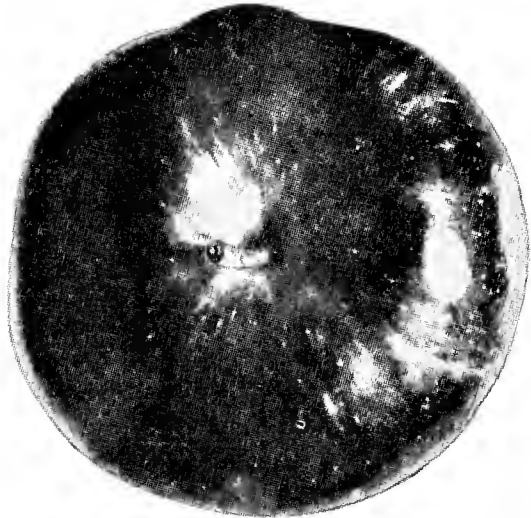
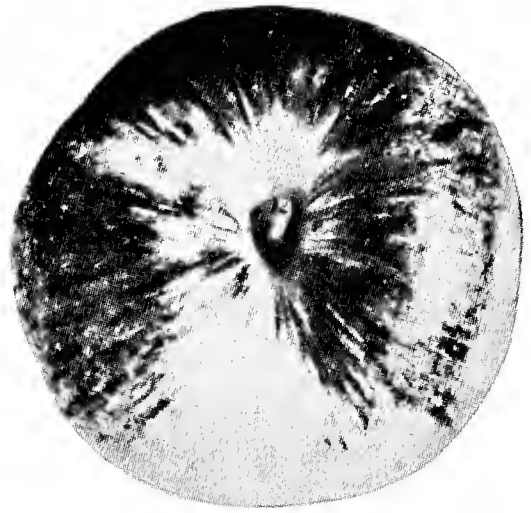
### Haralson

**The Best Hardy Winter Apple**

Haralson is Minnesota's only hardy, high quality, red, winter eating apple that will keep until late spring in ordinary storage. The Northwest's best winter apple.

The tree is an upright grower with strong, wide angle crotch and branching system. It is a vigorous tree, very productive and resistant to fire blight. The fruit is about the size of a Wealthy, is borne at an early age, and hangs well to the tree until picked. The fruit is an attractive red in color and good in quality. Entirely hardy. No home or commercial orchard is complete without Haralson. Season, January to April.

Minnesota Station Bulletin No. 230, in describ-



Below: Daniels Red Duchess  
Above: Ordinary Duchess

*This photo reproduced from the Journal Series Paper No. 89, Minnesota Agricultural Experiment Station, shows the marked contrast between the even dark color of the DANIELS RED DUCHESS and the streaked and splotted red and green of the ordinary variety.*

ing this variety, says: "It leaves nothing to be desired as a cooking apple and is a pleasant desert fruit during middle and late winter." Haralson is now generally accepted as the Northwest's best hardy, red winter apple. Plant it freely.

We recommend the use of Haralson as a stock for topworking in preference to Hibernial or Virginia Crab.

**McINTOSH.** Brilliant deep red, deliciously flavored, crisp, snow-white flesh. Pleasant aroma. Keeps until January. One of the finest apples grown.

**NORTHWESTERN GREENING.** The best and longest keeping of the Greenings. Fine cooking apple. Keeps until Spring.

**WEALTHY.** The best market and most popular home orchard variety. The Northwest's one best apple. Keeps until January.

**WHITNEY CRAB.** Good color. Crisp flesh and immensely pleasant flavor. Strong upright grower. One of the finest crabs for eating.

## Extra Large—Specially Selected Apple Trees

For several years we have offered an extra large, bearing age plum tree—a grade which has been our heaviest selling size. We are glad to be able to offer you this year a corresponding grade of apple trees—especially selected, large well formed, perfectly balanced trees—specimens that are worth far more than the slight extra price we ask. You'll be more than delighted with them!



## DANIELS QUALITY GRAPES

Fresh, ripe, juicy grapes; vine ripened and melting in the mouth; beautifully colored twangy jelly. Pure grape juices with the zip and zest that only grape juices may have. This may all be yours if you will but plant a few grape vines.

The hardier varieties, such as Alpha and Beta, may be grown under any conditions that the native wild grapes will endure. For best production they should be grown in vineyard form on a trellis, although they may be used for any type of screening to which the wild grape is adapted, as they are hardy without winter protection.

For dessert purposes we suggest such varieties as Concord, Delaware, and Niagara, the most popular blue, red and green grapes respectively. These varieties do best when grown on a trellis in such a manner that they can be covered for winter.

The grape plants we offer are all strong, two-year plants.

**BETA.** The standard hardy grape. Very productive; yields of from  $\frac{1}{2}$  to 1 bushel per vine are not uncommon in well cared for vineyards. Hardy grapes have been one of the most profitable fruit crops in recent years. Price: 25c each; \$2.50 for 12; \$4.50 for 25; \$17.00 for 100.

**ALPHA.** The improved Beta. A more recent introduction than Beta but preferred to it by many of those who have grown both. Similar in production and has most of the Beta characteristics but is commonly considered to be of better flavor than Beta. 30c each; \$3.00 for 12; \$5.50 for 25; \$20.00 for 100.

**CONCORD.** The most popular table grape and the most widely grown of the blue dessert grapes. It is the standard of comparison for all other grapes. 25c each; \$2.50 for 12; \$4.50 for 25.

**DELAWARE.** The finest red grape. If you are looking for a beautiful, reliable grape of the very finest quality, Delaware, with its unequalled spiciness and sweetness, will fill the bill. 35c each; \$3.50 for 12.

**NIAGARA.** America's leading green grape. Splendid quality; very productive. Niagara holds the same enviable place among green grapes that Concord does among the blue ones. 35c each; \$3.50 for 12.

## AN ORCHARD IN ONE TREE

### 3 Kinds of Apples on One Tree

To meet the demands of those who want several kinds of apples and have only a small area to plant in we have developed, through grafting, some splendid "3 in 1" trees, bearing three distinct kinds of apples—the famous Daniels Red Duchess, the Haralson, and that largest of red apples, the Erickson. These are large trees, ready to bear soon, and at the special price of only \$3.00 each. Ask for our special "3 in 1" apple trees.

\$3.00 each; 3 for \$7.50

## DANIELS QUALITY CURRANTS

**RED LAKE (Minnesota No. 24).** The finest of all currants has just received the final approval from the State University and been given the name "Red Lake." Red Lake has undergone thorough testing for several years at the Minnesota Experiment Station, and throughout the Northwest, wherever tried, it has shown a marked superiority over all other varieties. It is of splendid quality, exceptionally large with long clusters well filled to the tip. Ripens early mid-season but holds on for a long period so that it can be marketed when prices are highest. Professor Alderman states that he believes it is the largest fruited and heaviest yielding currant in Minnesota. Supplies of this wonderful currant are limited, so we urge early ordering. We offer large 2 year No. 1 plants at 35c each; \$1.00 for 3; \$3.50 for 12.



*Red Lake Currant*

**PERFECTION.** Probably the finest of the older varieties of currants for home use. 35c each; \$3.50 for 12; \$6.50 for 25.

**LONDON MARKET.** The leading market variety in many parts of the middle-west. Vigorous grower and prolific yielder. 20c each; \$1.50 for 12; \$3.50 for 25.

Chief's Nine Points of Superiority

Chief surpasses practically all of the commonly grown raspberries in these nine important points:

- Earliness
- Heavy production
- Hardiness
- High quality
- Shipping quality
- Resistance to mosaic
- Immunity to mildew
- Resistance to anthracnose and gray bark
- Strength and vigor of cane



A field of Daniels Mosaic-free Chief Raspberries

DANIELS HARDY RASPBERRIES

No factor is more important in determining whether or not a raspberry growing enterprise will be profitable than the securing of disease-free hardy, northern grown plants. Daniels plants not only fill the bill in these respects but are grown and handled so that they reach the planter in perfect growing condition.

Chief

(Mosaic-free)

The Country's Greatest Early Red

CHIEF is generally conceded to be the outstanding early, hardy red raspberry for the Northwest. A seedling of Latham, it has practically all the good points of its parent and in addition many others, for it surpasses Latham in hardiness, yield, quality, disease resistance and starts ripening from a week to ten days earlier.

In describing "Chief" Professor W. H. Alderman, Chief in Division of Horticulture, University Farm, writes as follows:

"As compared to Latham, it possesses the advantage or ripening ten days earlier, it is much more resistant to such diseases as mosaic and mildew and slightly more resistant to the disease of anthracnose and spur blight; it is distinctly more resistant to low winter temperatures than Latham; it has outyielded Latham in two carefully conducted tests at the Fruit Breeding Farm; it is of better quality than Latham; it is a more vigorous plant maker and produces stockier canes. As far as I can see the only point where it does not attain superiority over Latham is in the size of the berry. The fruit is somewhat smaller but is large enough for commercial purposes and is, on the whole, rather more attractive than the older variety."

Chief makes an ideal running mate for Latham, furnishing an early berry while Latham furnishes a late one. Throughout the northern part of Minnesota and adjacent severe sections Chief has proven especially popular, for in sections where most other varieties kill to the snow-line Chief comes through without any injury whatsoever.

We have a splendid stock of Chief plants, all carefully inspected several times by the State Nursery Inspection Service and guaranteed to be absolutely true to name and free from serious diseases.

Price: 75c for 12; \$1.25 for 25; \$3.50 for 100; \$22.50 per thousand.

Latham

(Mosaic-free)

The Country's Greatest Late Red

This, the finest and most profitable of all late raspberries, was also originated at the Minnesota Fruit Breeding Farm. Because of its marked superiority it has replaced all older late red raspberries throughout the East as well as in the Middle-west.

Latham is a strong grower with exceptionally vigorous canes, well able to support its enormous loads of berries. Hardy throughout most of the Northwest without protection. The berries are of splendid quality, ship well and are famous for their large size, frequently an inch in diameter.

Daniels plants reach you in perfect growing condition, full of pep and ready to give you the finest raspberry growth and productivity you have even seen. Wherever our plants are used they at once become the standard to which other raspberries are compared.

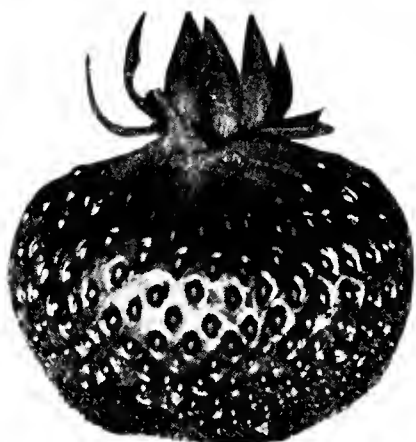
Our high quality, disease-free Latham plants make an ideal foundation for a lastingly profitable raspberry patch.

Prices: 75c for 12; \$1.25 for 25; \$3.50 for 100; \$22.50 per thousand.

ANCIENT BRITON BLACKBERRY

The extreme popularity of this splendid blackberry is well deserved, for it is not only the hardiest of the better blackberries but is the best in quality. Plants are vigorous and very productive. Probably the best for home and commercial plantings in the North.

Prices: \$1.25 for 12; \$2.00 for 25; \$6.00 for 100.



## DANIELS QUALITY STRAWBERRIES

Daniels hardy, Northern grown strawberry plants have been produced on specially selected and prepared soils to meet the needs of planters here in the Northwest. The most exacting care is exercised in every step of their growing, digging, handling and packing. When you buy Daniels plants you are buying strawberry satisfaction.

Add 10c per 100 if to go by mail.

**PROGRESSIVE. Everbearing.** The most cosmopolitan of the older everbearing varieties, well adapted to all soils and climates. Daniels Progressive plants are of a specially selected strain which has given results superior to ordinary Progressive plants. 75c for 25; \$1.50 for 100; \$10.00 for 1,000.

**MASTODON. Everbearing.** Considered the best of the everbearing varieties. A veritable Mastodon in size. Produces a heavy group of large berries both in June and throughout the late Summer and Fall. The largest of the everbearers in both Spring and Fall crops. Good quality and a very heavy producer. 75c for 25; \$1.75 for 100; \$14.00 for 1,000.

**BEAVER. Early.** Generally conceded to be the most profitable, the heaviest producing, earliest and most all round satisfactory of all the June bearing varieties for the Middle-west. Rapidly superseding other varieties. A good shipper and general market berry. Splendid color inside and out; holds its size well to the end of the season. High quality; very heavy yielder. A free grower, with healthy, vigorous plants. The one best all round June bearing variety. 50c for 25; \$1.25 for 100; \$8.00 for 1,000.

**PREMIER. Early.** A very popular variety, with firm, bright red berries which maintain large size throughout the season. Good quality and a popular market variety. 50c for 25; \$1.25 for 100; \$8.00 for 1,000.

**DUNLAP. Mid-season.** The most widely grown strawberry in the North. Equally good market or home berry. Adapted to all soil types. 50c for 25; \$1.00 for 100; \$7.00 for 1,000.

## DANIELS QUALITY GOOSEBERRIES

**CARRIE. The Thornless Gooseberry.** Carrie has been the most popular gooseberry in Minnesota and adjacent states in the past. It is a prolific yielder of good sized berries which ripen red. Sometimes called the thornless gooseberry because the pricklers are lost from the wood after the first year. We offer strong plants ready to fruit next year. 20 each; \$2.00 for 12; \$4.00 for 25; \$16.00 for 100.

**COMO. Minnesota's New Wonder Gooseberry.** (Minnesota No. 43.) Described by the originators, the Minnesota State Fruit Breeding Farm, as follows:

"A vigorous, productive plant with exceptionally healthy foliage. Fruit roundish or slightly oblong. Ripens green, quality fair, holds on the bushes a long time in good market condition without scalding, even in the hottest weather. The plant is only moderately thorny, many thorns dropping from the two year old wood."

The advent of Como marks the greatest advancement made in mid-western gooseberry culture in many years. 35c each; \$3.50 for 12; \$6.50 for 25.



*Como Gooseberry*

## SMALL FRUIT HELPS



## Two Up-to-date, Helpful Bulletins

relating to all phases of small fruit culture issued by the University of Minnesota are free for the asking. They are—

**Special Bulletin No. 72**

**"Modern Strawberry Growing"**

**Special Bulletin No. 79**

**"Modern Bush Fruit Growing"**

They are both written by our Mr. Franc P. Daniels, who for many years has been a lecturer on the staff of the University, Division of Horticulture. They may be had free by writing to the Division of Publications, University Farm, St. Paul, Minn.



## The Famous New McDONALD CRIMSON RHUBARB

**Highest Color — Highest Quality  
Highest Yielding  
The Peer of All Other Rhubarbs**

McDonald is the most talked of rhubarb in America today, and rightly so, for it is vastly superior to all other varieties now in use in this country. In describing this variety Professor L. G. Bunting (the originator) writes us as follows:

“It is a very highly colored, attractive red stalk, of large size, productive, very tender and succulent, and of excellent quality, and particularly valuable for pies and desserts. Its color when cooked without peeling is as attractive as that of raspberries.”

Appreciating the tremendous demand for it in this country, Professor Bunting has made arrangements for it to be grown and distributed by two nurserymen in this country, one in the East and one in the West. We are fortunate to be chosen to handle it in the Middle-west. Our planting of McDonald, the largest in the country, has been a joy to watch, and a surprise to all who have come to inspect the field, because of its large, uniformly red, crisp, tender and mild stalks, and because of its tremendous vigor under dry conditions. Everyone who grows rhubarb, whether for home or market, will want some McDonald, so we suggest ordering early. We offer strong divisions. 75c each; 3 for \$2.00; \$7.50 for 12. Write for special prices to commercial growers using large quantities.

**VICTORIA RHUBARB.** The most widely grown and popular of the old standard varieties. Our strong division plants should not be confused with the low quality seedling roots commonly offered by some firms. 15c each, \$1.50 for 12; \$3.00 for 25; \$10.00 for 100. By mail add 25c dozen. Large producing clumps, each 50c; \$4.00 for 12. Clumps go by express only.

.....

Feb. 7, 1933.

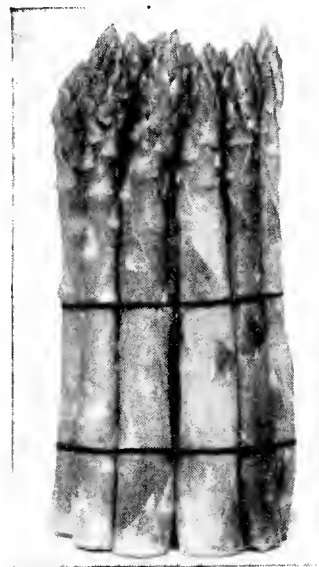
“Last year I bought 25 Macdonald Rhubarb roots for trial. These were exceptionally nice roots. Their growth, color, size were superior to good local variety planted with them. Will you please give me prices by the hundred and thousand on Macdonald Rhubarb roots as soon as possible.”

Kenneth S. Roberts, New Jersey.

Under date of December 12, 1931, Dr. C. F. Patterson, Professor of Horticulture, University of Saskatchewan, Saskatoon, Sask., wrote of the Macdonald rhubarb: “It is without doubt the best variety that we have undertaken to grow. It is in a class by itself. I think this is the unanimous verdict of all that have compared it with other varieties.”

The late Hon. J. L. Perron, Minister of Agriculture for the Province of Quebec, and one who conducted quite a large farm, having over an acre of rather inferior rhubarb, said when he saw and was given a sample of the Macdonald variety: “Why! I will have it placed on every farm in Quebec.”

.....



*Mary Washington*

**MARY WASHINGTON ASPARAGUS.** The giant asparagus, introduced by the United States Department of Agriculture, is everywhere admitted to be the finest variety grown. It has surpassed all other varieties in yield and quality and proven itself entirely rust proof. For home gardens where quick results are wanted our 3 year old roots are especially valuable.

2 year: 75c for 12; \$1.00 for 25;  
\$3.00 for 100.

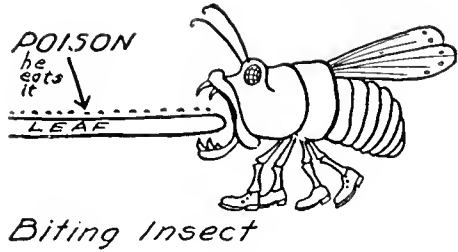
**MINT.** A splendid perennial which supplies the table with delicious mint flavoring for sauces, jellies and beverages. Clumps 15c each; \$1.50 for 12.

**CHIVES.** Sometimes called **Grass Onion.** Ever popular for garnishing or for adding a delightful onion flavor for soups, salads or what have you. Clumps 20c each; 40c for 3; \$1.30 for 12.

### PLANTING DISTANCE OF FRUIT PLANTS

	Usual recommended distance	Best average distance	Number per acre at average distance
Apple.....	25 to 32 ft.	30 x30 ft.	48
Plum.....	16 to 22 ft.	20 x20 ft.	108
Pear.....	22 to 30 ft.	25 x25 ft.	69
Cherries.....	12 to 16 ft.	14 x14 ft.	147
Raspberry—(Hill).....	4x6 or 5x5 ft.	4 x 6 ft.	1815
(Hedge).....	1½ to 3 ft. by 6 to 7 ft.	2 x 6 ft.	3630
Blackberry.....	1½ to 3x7 ft.	2 x 7 ft.	3110
Gooseberry.....	4x6 ft.	4 x 6 ft.	1815
Currant.....	4x6 ft.	4 x 6 ft.	1815
Grape.....	8x8 ft.	8 x 8 ft.	680
Strawberry—Everbearing.....	15 to 18 in. x 3 to 4 ft.	1½x 3 ft.	9680
June bearing.....	18 to 24 in. x 4 ft.	2 x 4 ft.	5445

To determine the number of plants required per acre for any distance multiply the two-plant distances and divide the product into 43,560 (the number of square feet per acre).



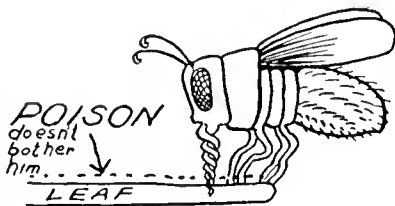
Biting Insect

## INSECT and DISEASE CONTROL

Insects are commonly divided into two groups—the biting and the sucking. The former are equipped with biting mouth parts with which they chew off and consume parts of the plant tissue. Whenever one sees holes being eaten in the leaves, or the leaves disappearing as the insect works, he can be sure that it is the biting type of insect that is doing the damage. To control it a poison such as Arsenate of Lead is dusted or sprayed onto the leaf surface, so that the insect, as he continues his feeding, will devour the poison along with the plant tissue.

Sucking insects, on the other hand, do not devour any plant tissue but by means of an elongated mouth part, or proboscis, pierce the leaf or stem and suck out the juices from the inside in much the same manner that the mosquito feeds. Arsenate of Lead or similar stomach poisons have no effect upon the sucking type. They must be controlled by using a spray material which kills by coming in contact with the body. Some form of tobacco spray (Nicotine Sulphate) is mostly used.

Of the various groups of plant diseases only one, the Fungus Diseases, is effectively controlled directly by spraying. This type of disease spreads by means of a small single-celled part called a spore. The spores float through the air, light on the host plant and under favorable conditions of temperature and moisture "spout," sending out a minute "shoot" which grows along the surface of the plant until it finds an opening through which it gains admission. Once inside of the plant, sprays do not affect it, but it may be held in check by a coating on the plant surface of a poison such as Lime Sulphur, which can kill the shoot before it gets into the plant tissue.



Sucking Insect

## SPRAY PROGRAM FOR MINNESOTA

### 1. ARSENATE OF LEAD AND LIME SULPHUR SPRAY

Water.....	50 gals.....	1 gal.
Arsenate of lead, powdered.....	1½ lbs.....	3 tsp.*
Lime Sulphur, commercial liquid.....	5 qts.....	12 tsp.
or Lime Sulphur, commercial dry.....	5 lbs.....	4 tsp.*

\*Use heaping teaspoonful

### 2. NICOTINE SULPHATE SPRAY

Water.....	50 gals.....	1 gal.
Nicotine Sulphate 40 per cent.....	½ pt.....	1¼ tsp.
Soap—any kind.....	2-3 lbs.....	1 oz.

General notes: Spraying should be done under high pressure. Two hundred lbs. or more is better than low pressure. Cover every tree and plant thoroughly, and, above all, be sure to do the spraying at the proper time, as a delay of a few days will impair its effectiveness.

### SPRAYS FOR APPLES

First spray: When first flower buds show pink, use No. 1. Pests controlled—Early stages of leaf eating caterpillars, curculio, and scab.

Second spray: As soon as petals drop from flowers and before calyx closes, use No. 1. Pests controlled—Codling moth caterpillars and those listed under first spray.

Third spray: Last week of June or first week of July, use No. 1. Pests controlled—Codling moth caterpillars and those listed under first spray.

### NOTES

Apple Maggot: If it is very troublesome, give other sprays about July 20 and August 10. Use No. 1.

Scale Insects and Eggs of Plant Lice: Spray with liquid lime-sulphur, one part to seven parts of water, or powdered lime-sulphur, 20 pounds to 50 gallons of water, before buds open.

Plant Lice: If lice are noticed on apples, plums, or other plants in early spring, just as the buds are bursting, spray with nicotine sulphate No. 2. Follow with same material later if plant lice appear. The nicotine sulphate, without soap, may be added to the regular spray No. 1.

### SPRAYS FOR PLUMS AND CHERRIES

First spray: Just before blossoms open, use No. 1. Pests controlled—Curculio, plum pocket, blossom and twig blight.

Second spray: Just after the petals fall, use No. 1. Pests controlled—Curculio and brown rot, plum pocket.

Third spray: When plums are the size of small peas, use No. 1. Pests controlled—Curculio, brown rot and shot hole.

Fourth spray: When fruit first starts to color. If washed off by rain, repeat immediately. Use No. 1. Pests controlled—Curculio, brown rot, and shot hole. If shot hole is bad, spray again after fruit is picked.

### SPRAY FOR CURRANTS AND GOOSEBERRIES

Plant Lice Eggs: Just before buds open, liquid lime-sulphur. Six gallons (or powdered 20 pounds) to 50 gallons of water.

Currant Worm: Arsenate of lead, 1½ pounds to 50 gallons of water, as soon as caterpillars are seen. If the second brood appears when the fruit is nearly mature it is safer to use hellebore, which may be dusted on leaves in early morning.

### CUT WORMS

The cutworm has long been one of the most widespread and difficult to control of the garden pests—but with this new poison bait method they may be easily controlled with practically 100 per cent effectiveness. The best poison bait is mixed as follows:

Bran.....	25 pounds
Paris Green.....	1 pound
Molasses.....	2 quarts
Water.....	¾ gallon

For smaller amounts use—

Bran.....	2 quarts
Paris Green.....	1 teaspoonful
Molasses.....	½ cup
Water.....	3 cups

If Paris green is not available use white arsenic but not arsenate of lead. Use cheap molasses with strong odor. Mix thoroughly the bran and poison, dilute the molasses with water and mix this liquid with the bran mixture.

The bait should be damp but not soggy. Sprinkle along the garden rows or broadcast at the rate of 12 to 15 pounds per acre.

The best time to apply is in the evening, as the cut worms are then coming out for their night's work.



### DANNY SAYS:

*They're easy to get if you just know how. Should you need additional help in solving your insect and disease problems just write to the boss about it. Besides keeping his nursery stock free from all forms of pests, he's holding them down on over 50 acres of fruits and vegetables every year.*

# Garden Accessories and Necessities . . .

## Birdfont

Few garden accessories can add such a touch of charm and interest to a planting as can a Bird Bath. We feature two sizes, equipped so that they can be used either as an ordinary bird bath or with a fountain spray.

Their design is of striking simplicity with a full Doric column of outstanding beauty and symmetry. Our bird baths are constructed of enduring concrete properly reinforced and are furnished either in gray stone or cast in color.

We have them in both a junior and senior size. The Junior Bird Bath height is 26 inches. Diameter of bowl 20 inches. Diameter of base 10½ inches. Gray stone. Piped, including one jet head, \$8.75.

We can furnish this same size cast in color to suit for \$12.00.

Senior Fountain Bird Bath. Height 34 inches. Bowl 26 inches, piped, complete with pipe set, \$15.00.

## Daniels Lawn Seed

Daniels special lawn grass seeds are building turf of outstanding beauty. We have pure mixtures for the usual locations, and for the shady and unusual spots as well. The universal satisfaction our lawn mixtures give is due to the fact that only seeds of the highest vitality and germination are used—that we use “strong” mixtures—all seeds which are needed—not “padded” with a large per cent of cheap, temporary “stuff.” Our mixtures are pure—free from noxious weed seeds. We will gladly quote prices on any amounts needed, or on cost of establishing or renovating lawns, including skilled labor.

## Rockery Materials

From the famous Lannon limestone pits of Eastern Wisconsin, from the local boulder speckled fields, from the Minnesota Valley sandstone quarries, and from the weathered limestone outcroppings of our northern river valleys, we have gathered the choicest materials for rockeries, walls and flagstone walks. We can furnish material exactly suited to every need of this sort and will be pleased to quote you on your individual requirements.

## FERTILIZERS

Plant life, like animal life, must have food—the right kind and correct amounts—if it is going to thrive and develop as it should.

We have fertilizers for every need, whether it be lawns, shrubs, flowers or trees. We will be glad to advise you as to the best fertilizer to use for your requirements. Special fertilizers should be used for special purposes. We carry the following brands.

**VIGORO**—A complete plant food for general purposes. 100-lb. bags, \$4; 50-lb. bags, \$2.50; 25-lb. bags, \$1.50.

**MILORGANITE**—A very good standard plant food. It will not burn foliage. Has a lasting action. 100-lb. bags, \$3.00; 50-lb. bags, \$1.85; 25-lb. bags, \$1.25.

**BONE MEAL**—100 lbs., \$3.25; 50 lbs., \$2.00. A slow acting plant food—good for a long period.

**TREE FOOD**—We prepare our tree food, using the most desirable elements required for the individual project. Where fast action is wanted we furnish a special mixture and where long action over a period to secure a moderate stimulant is required we prepare a different analysis. A careful checking of all conditions relating to existing trees should be made first. Call us—we will advise the best procedure. Our tree food is reasonable in price.

## Peat

### The Gardener's Helper

One of the relatively recent developments in modern gardening is the use of peat—especially prepared and pulverized for horticultural purposes.

Peat has much to offer in the way of a soil conditioner—through its water holding capacity—and as mulch about evergreens, perennials, etc.—in the garden and border. We are in a position to furnish you a peat suited to each horticultural need and purpose. We will be pleased to go over the matter with you, giving full information relative to the help peat can bring to you in solving your individual problems. It is economical to use, too—in the manner in which we handle it. Prices quoted on application.

## Animal Fertilizer

We are in a position to furnish our clients in the Twin Cities and in the Minnetonka area the finest grade of rich, composted animal manures of various sorts. Prices upon request.

## Tree Food

We have a specially prepared tree food for use in fertilizing trees. All trees require plant food where they have been established for a long period of time. Constant watering of the lawn tends to leach out plant food within the root area of trees. New food should be furnished each year. The required amount of our plant food for each tree is three pounds for each inch of diameter of the tree, measured one foot from the ground. Our specially trained tree men can do this work at the lowest unit cost. We have made an unusually low price on materials this year.

## “Peatnure”

A special Daniels brand of peat soil and animal fertilizer composted. There is no better material for garden mulching, or top dressing, or lawn treatment. Something new and worth while! Further information and prices upon application.

## Black Dirt

There's a big difference in soils. We are furnishing our local trade with two of the finest types of garden and lawn soil—one a high mineral soil for general use, and the other a bottom land soil especially high in organic matter, splendid for lawn top coating and similar purposes. Prices upon application.

## Tree Protectors

Rabbit and mouse damage is an ever-present winter danger. The logical answer to their threats is this sturdily built tree guard—the best of its type that we have ever seen. They are strong, durable, neat in appearance and are built to last a lifetime. Quickly placed in position without special tools and anchored to the ground so that they will stay securely “put.” Six inches in diameter and furnished in two sizes, 18 and 24 inches high, at 75c each.

## BOOKS

Write for our complete list of Garden Books—Sixty-five in all. Prices and descriptions given in this booklet. They cover a wide range of subjects on gardening and are considered the best available today.

Every home owner should have some of these Garden Manuals for ready use.

Write us—Booklet is free—

Our planting booklet—most concise, complete book available is also free—for the asking.



DANNY SAYS:



*There's fun in digging around in the soil, but don't forget that the kiddies will enjoy a little garden all their own, too.*



Instructions for Ordering by Mail

**WHEN TO ORDER**—As early as possible. "First come, first served," is the rule. Early ordering is a big help to us, and frequently late orders cannot be filled in full. Why not send your order in now? It will be carefully booked and shipped to you at the time you want it.

**SPECIAL DISCOUNTS**—It is a great advantage to us to have orders reach us early, as the bulk of our business is crowded into a short period in the Spring. This means a heavy load on our office facilities. So that we may better organize our Spring work and as an inducement for our customers to place orders early, we are offering the following liberal cash discounts for early orders. All orders with full cash payments sent in before the dates indicated will be entitled to a cash discount to the value indicated below:

Orders mailed prior to March 10, 1933	8%
Orders mailed prior to March 20, 1933	6%
Orders mailed prior to April 1, 1933	4%

**PRICES**—Prices listed in this catalog annul and supersede all prices quoted previously. All prices are F.O.B. Long Lake, Minn., unless otherwise specified.

**TERMS**—Our business and moderate price schedule have been built on a cash with order policy, and we prefer to have your orders accompanied by cash in full. This plan enables us to keep down costs and to maintain low prices. If C. O. D. shipments are preferred, 20 per cent must accompany the order, balance C. O. D.

**RESERVE ORDERS**—We will reserve stock for those who so desire upon payment of 10 per cent with order.

**METHOD OF SHIPPING**—Express is safest and generally the best way to ship plants. Express orders are sent transportation charges collect. Many small orders may be shipped satisfactorily by parcel post. These will be sent postal charges C. O. D. unless proper amount is added to your remittance. Our trees (both fruit and ornamental) are fine, strong, trees; too large to go by mail.

**QUARANTINE**—Because of a change in Federal quarantine, we are now shipping currants

or gooseberries to points outside of Minnesota. They are all dipped before shipping.

**COMPLAINTS**—Any complaints will be taken care of satisfactorily if we are notified upon receipt of plants. If there is anything wrong, let us know at once, while there is still time to make amends, for we want only satisfied customers.

**REPLACEMENTS**—We will replace plants that fail to grow the first year at one-half the purchase price, provided that such failure to grow is not due to neglect or improper handling on the part of the purchaser. All replacement claims must reach us prior to October 1 of the Fall following planting. The short season of work with rush orders may cause some error on our part. We therefore suggest that you check our plants immediately upon arrival. Notify us promptly of error and we will make corrections at once.

**STRAWBERRY PLANT REPLACEMENTS**

We make every effort to have our strawberry plants reach the planter in good growing condition. Any claims based on poor condition of plants must be made immediately upon arrival. Because of the many factors which may adversely affect a strawberry plant's growth after delivery, we can in no way assume responsibility for their growth nor do we agree to replace strawberry plants which fail to grow.

**PLANTING INSTRUCTION GUIDE** sent free at any time.

**OUR GUARANTEE**—We exercise the utmost care in labeling, packing and shipping our plants, and guarantee them to be true to name, and will replace free of charge any which prove to be otherwise. It is understood and mutually agreed between purchaser and ourselves that in no case will we be liable for more than the original cost of the plants. We cannot be held responsible for inability to make delivery because of strikes, fires, acts of nature, or any other cause beyond our control.

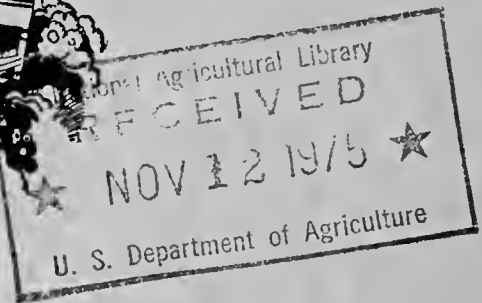
DANNY SAYS:



*Write Plainly, Order Early, and Rest Assured That You Will Have the Best Plants That Money Can Buy. Send all orders to*

**THE DANIELS NURSERY, INC.  
LONG LAKE, MINNESOTA**

THE DANIELS NURSERY, INC.  
LONG LAKE AND MINNEAPOLIS  
MINNESOTA  
1934



## DANIELS TREE AND GARDEN CARE

Entrust the care of your trees and landscape plantings to our  
skilled and experienced gardeners

### WE SPECIALIZE IN

Tree Trimming

Hedge Trimming

Rock Gardens

Garden Construction and Maintenance

Estimates given—no obligation

Tree Surgery

Shrub Pruning

Lawn Fertilizing

Phone: Minneapolis Gladstone 2283

Long Lake 8648 (Toll)